

About Town

St. Bartholomew's Church Club... St. Mary's Episcopal Guild... The Adult Study Class...

St. Bartholomew's Church Club

St. Bartholomew's Church Club... St. Mary's Episcopal Guild... The Adult Study Class...

St. Mary's Episcopal Guild

St. Mary's Episcopal Guild... The Adult Study Class... Members of World War I Bar...

The Adult Study Class

The Adult Study Class... Members of World War I Bar... Grade 6 Class of North Methodist Church...

Members of World War I Bar

Members of World War I Bar... Grade 6 Class of North Methodist Church... A Lenten Office will be held...

Grade 6 Class of North Methodist Church

Grade 6 Class of North Methodist Church... A Lenten Office will be held... The Adult Study Class...

A Lenten Office will be held

A Lenten Office will be held... The Adult Study Class... The commission on stewardship...

The commission on stewardship

The commission on stewardship... The Adult Study Class... The Adult Study Class...

The Adult Study Class

The Adult Study Class... The Adult Study Class... The Adult Study Class...

State News

175 Rally At Confab Of Youth

DANBURY (AP)—An orderly group of some 175 young people gathered for a conference...



Guard turns away new Panama head at assembly building. (AP Photofax.)

New Panama Head Seeks To Fire Guard Leader

PANAMA (AP)—Hoscar try's only armed force. Rioting charges that he violated the constitution by promoting a candidate to succeed him in the Guard...

Police Seek Suspect In Teacher's Death

CAMBRIDGE, Mass. (AP)—Police say a young man with brown hair and a blond mustache is the prime suspect in the slaying of the girl who was to have been maid of honor for the bride...

Bay State Stabbing

Police arrested one member of the opposition today and sought another on charges of possession of Molotov cocktails. Police arrested one member of the opposition today...

Archbishop Of Atlanta Dies at 56

ATLANTA, Ga. (AP)—Archbishop Paul J. Hallinan, whose first act as archbishop of the archdiocese of Atlanta was to order the desegregation of Roman Catholic schools...

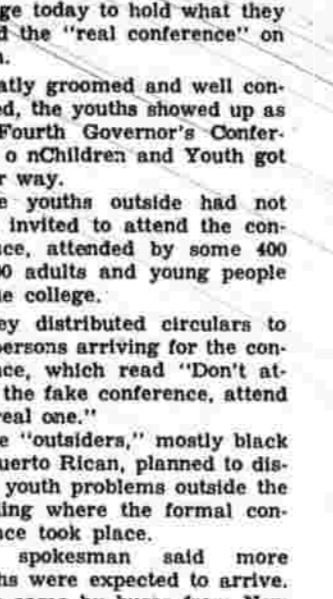
Newsman Flies Over Khe Sanh

Los Angeles Times newsman flying in an Air Force spotter plane over the Khe Sanh battle zone. The plane was shot down by enemy forces...

McCarthy Country

Rift Called 'Tempest in Teapot'

McCarthy backers await Kennedy at University of Washington. (AP Photofax.)



McCarthy backers await Kennedy at University of Washington. (AP Photofax.)

Two McCarthy Campaigners Quit

WASH., D.C. (AP)—A top McCarthy aide today said that he and another McCarthy campaigner had resigned from the campaign...

Elite Ask Czech Party Chief To Resist Outside Pressure

PRAGUE (AP)—Czechoslovakia's cultural elite called today on Communist party chief Alexander Dubcek to resist outside pressure after he acknowledged the Soviet bloc working habits...

GI's Battle Enemy To Get Hamlet

Saigon (AP)—American infantrymen supported by tanks, artillery and planes battled the Viet Cong today for control of a Viet hamlet northwest of Saigon in the fourth straight day of heavy fighting in the area...

Spotter Plane Like Roller Coaster

A broad, well-traveled dirt road runs straight east over the border from Laos and winds slightly south between the Xe Sanh River and the Khe Sanh battle zone...

GI's Battle Enemy To Get Hamlet

Saigon (AP)—American infantrymen supported by tanks, artillery and planes battled the Viet Cong today for control of a Viet hamlet northwest of Saigon in the fourth straight day of heavy fighting in the area...

McCarthy Country

Rift Called 'Tempest in Teapot'

McCarthy backers await Kennedy at University of Washington. (AP Photofax.)



McCarthy backers await Kennedy at University of Washington. (AP Photofax.)

Two McCarthy Campaigners Quit

WASH., D.C. (AP)—A top McCarthy aide today said that he and another McCarthy campaigner had resigned from the campaign...

Elite Ask Czech Party Chief To Resist Outside Pressure

PRAGUE (AP)—Czechoslovakia's cultural elite called today on Communist party chief Alexander Dubcek to resist outside pressure after he acknowledged the Soviet bloc working habits...

GI's Battle Enemy To Get Hamlet

Saigon (AP)—American infantrymen supported by tanks, artillery and planes battled the Viet Cong today for control of a Viet hamlet northwest of Saigon in the fourth straight day of heavy fighting in the area...

Spotter Plane Like Roller Coaster

A broad, well-traveled dirt road runs straight east over the border from Laos and winds slightly south between the Xe Sanh River and the Khe Sanh battle zone...

GI's Battle Enemy To Get Hamlet

Saigon (AP)—American infantrymen supported by tanks, artillery and planes battled the Viet Cong today for control of a Viet hamlet northwest of Saigon in the fourth straight day of heavy fighting in the area...

B D PEARL'S BIG DRIVE IS ON Electric Dryers OPEN TONIGHT TO 9 P.M. \$15.00 WIRING ALLOWANCE ON HELCO LINES TILL MARCH 31st

Even this lowest-priced Frigidaire Dryer offers Durable Press Care! Model DAN \$119.95

Budget-wise Dryer has special Durable Press Care settings on Timer! Model DDAN \$149.95

Just set this one on "Automatic"—and go! Model DCDN \$169.95

DOUBLE CONVENIENCE! Frigidaire 2-speed Washer for multi-fabric washing! Model WAN \$279.95

DOUBLE VALUE! Thriftiest Frigidaire Jet Action Washer! Model WCDAN \$359.95

DOUBLE VALUE! Frigidaire Electric Dryer with exclusive Flowing Heat! Model DDAN \$359.95

B. D. PEARL'S APPLIANCE—EST. 1941 649 MAIN STREET—TEL. 643-2171

Book Review

A FIELD GUIDE TO WILDS has a poor notion of what really happened. Obscurity is not a le-

THE SURVIVORS by Anne Edwards. Holt, Rinehart, \$5.95. Ten years ago, when she was 21, Luanne Woodrow had been tried and acquitted of mass murder.

IN THE HEART OF THE COUNTRY. And Other Stories. By William G. S. Hays. Farrar, \$4.95. The author is a remarkably tight writer.

1c SALE IS NOW IN PROGRESS ARTHUR DRUG

What you don't know about The Phone Store could fill a book.



A small book. But a book just the same. We call it The Telephone Line and it's becoming a best seller at the Phone Store.

STAR GAZER... Your Daily Astrology Guide According to the Stars. Includes a zodiac sign chart and a table of planetary positions.

Books Added To Library

ALPHEI—The chairman. Balfour—The medicine men. Beauvoir—Les belles images. Binkley—What shall I cry.

Shainwold on Bridge

IF you expect a great player to be great at all times you are in for a disappointment. We can prove the point by examining a hand from the 1964 world championship.

Legion to Mark Its 50th Year

Rockville American Legion Post 14 will celebrate its 50th anniversary April 20 with a semi-formal dinner and dance to be held at the National Guard Armory on West Rd.

Rham District School Board, After Poll, Allows Prom in Hartford

The Rham Board of Education reconsidered its earlier action and voted Monday night to allow the junior-senior prom to be held at the Hotel America in Hartford.

MARLOW'S Downtown Main Street Manchester Since 1911! 'DIRNDLETT' BOUFFANT PETTICOAT \$2.98 (White). CAPROLAN 100% NYLON TRICOT TORSO. TAFERON® FLOUNCE WIDE SCALLOPED LACE EDGE.

STANLEY WARNER 5th WEEK TEL. 643-7832 FREE PARKING BIRCH ST. REAR OF THEATER

WARREN BEATTY FAVE DUNAWAY BONNIE & CLYDE 'THE TAMING OF THE SHREW' 6:30-8:50

UA THEATRE EAST Mon. thru Fri. 7:30-9:15 Sat., Sun. 2:10-4:55-6:40-9:55

THE GRADUATE PANAVISION COLOR BURNSIDE THEATRE

GAY 90's GONE MAD, MAD MOD! THURSDAY NIGHT'S THE 'FRANTIC FIVE'

Japan Roads Deadly TORYO—Japan has 402 traf deaths each year per 100,000 vehicles. American roads and streets are far safer, with 52 of trumps, but one trump will die.

FUN IS THE SHOW OF THE YEAR FRIDAY, MARCH 29 GEORGE FEATURING 'THE BLUE BEATS' AND 'THE WILD WEED'

REWARD Yourself your boy friend, or husband with the New, Alive Young You! Lose your inches now...

Patti Wilson Figure Salon 629 MAIN ST., MANCHESTER—649-6452 NO APPOINTMENT NECESSARY!

St. Luke's Sets Scholarship in Honor of Zale A Joseph P. Zale Memorial Scholarship has been established at St. Luke's Church in addition to two scholarships to be awarded annually by the parish.

TERMITES Swimming Bliss call BLISS BE SURE... BLISS has been serving the Home Owner for 24 YEARS.

auditions. Absolutely great... the snappy look-a-oot of this delightful strap shoe from our Auditions collection.

MARLOW'S Downtown Main Street, Manchester Since 1911! Here's Style Plus Storage Space Galore! 4-PC. BEDROOM SUITE \$198

Organ Duo to Perform Shay Torrent and Axel Alex of the Provinces of Quebec, sponsor, internationally known quartet on all the television networks.

St. Luke's Sets Scholarship in Honor of Zale A Joseph P. Zale Memorial Scholarship has been established at St. Luke's Church in addition to two scholarships to be awarded annually by the parish.

Baseball Registration The Ellington Little League will hold baseball registration at the Town Hall Friday from 6:30 to 8:30 p.m.

Have You Tried Keith's "One-Stop Shopping"? We'll Come To Your Home To Advise You! We Have Terms To Please Everyone!

Keith's Is Open 6 Days For Your Shopping Convenience The Year Round! MONDAY thru SATURDAY 9:00 A.M. to 5:30 P.M. — THURSDAY and FRIDAY 9:00 A.M. to 9:00 P.M.

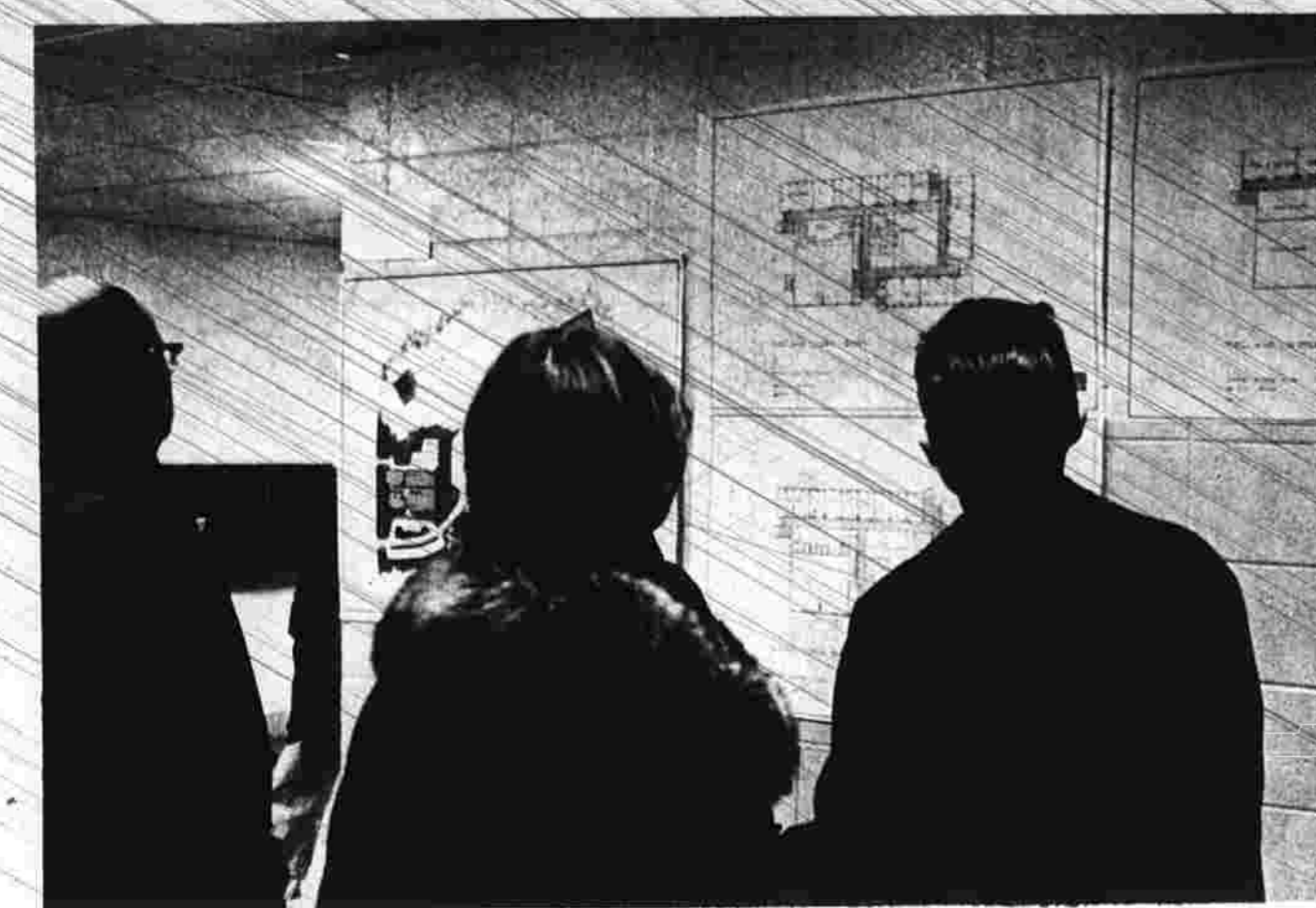
BRIGHT... BOLD... AND BEAUTIFUL! Two Rooms with the Look Young Moderns Love! decorate within your budget and get your fair share of fashion, too

Keith Furniture 1115 MAIN ST. MANCHESTER Opposite the Bennett Junior High School on Lower (South End) Main Street For Friendly Service, Phone 645-4100

Tolland

Middle School Upheld at Town Meeting

By BETTE QUATRALE
The Middle School Building Committee received the green light to proceed with plans for the construction of the proposed Middle School at last night's special town meeting.



Tolland residents view plans for proposed middle school before town meeting on scrapping plans.

What is a Middle School?
The petition seeks three feasibility studies, of which the site study would run from \$15,000 to \$20,000.

During the meeting, Morganston stated he had "resigned" from the Building Committee recently. Members of the Building Committee confirmed his resignation what is a middle school in relation to a high school or elementary school.

At the meeting opened it appeared it had been called by a ghostly crew. Questions were raised about the petition's recommendations for additions, and other aspects of the challenge to the Building Committee.

No one stood up before the meeting to field the answers, which were haphazardly given in some cases by other members of the audience.

It was not until Morganston began talking that the actual questions could be answered. Dan Reverese stated that the proposed Middle School will contain 700 students.

Lloyd Foster of Kent Rd., a school administrator in a neighboring town, stated, "I am highly impressed with Tolland's educational system, and am willing to pay the taxes to support it."

He spoke in favor of the town's educational system grouping the schools together. "I have watched a neighboring town's actions which were mainly concerned with saving money. We saved so much money, we now have to build a second high school. We found out the high school is not suitable for use as a high school any more and would make a better elementary school," he stated.

There is no tree free for anyone here," he stated. "All I get for my taxes is a dirt road, which hasn't been plowed since November, and I have no kids," the school board chairman added.

"It's a harebrained scheme to delay the start of this school for six months," he concluded. The possibilities of a strike could delay construction additional months, he said.

Manchester Evening Herald Tolland correspondent Bette Quatrale, telephone 875-2845.

Let the Profile Bread Plan help prolong your Slender Years.

Final Week BIG REDUCTIONS on DEMONSTRATORS and DISPLAY MODELS!

Now is the time to buy this great 7 1/2" wide sewing machine with the exclusive Golden Touch & Sew Cabinet shown in real life with matching hardwood bedstead. See other SINGER sewing machines from \$69.95.

What's new for tomorrow is at SINGER today!*

First Class Shoe Repairing Of The Better Kind! QUALITY WORK or REASONABLE PRICES!

SINGER advertisement featuring a woman in a dress, a Singer sewing machine, and promotional text including 'Now is the time to buy this great 7 1/2" wide sewing machine' and 'What's new for tomorrow is at SINGER today!'.

MEAT TOWN

1215 1/2 SILVER LANE, EAST HARTFORD • PLENTY OF PARKING! "Where Quality Always Exceeds Price!"

COMPARE OUR PRICES to Everyone Else's Specials... Direct From The West! OUR BEST CENTER CUT PORK CHOPS 65c Lb.

Strictly Fresh, Connecticut LARGE EGGS Dozen 43c

Hickory Smoked, Sugar Cured SLICED BACON 39c Lb.

Fresh Ground All Beef HAMBURG 10 Lbs. \$3.99

Very Meaty "Country Style" PORK RIBS 49c Lb.

Our Own, Freshly Made AMERICAN SAUSAGE MEAT 39c Lb. SPECIALS for THURS., FRI., and SAT.



Spring Concert of MHS Musical Groups Tonight

The Manchester High School Band, under the direction of Stephen Podgorasi, instrumental music instructor, rehearses a number for its Spring Concert, to be held tonight at 8:15 in the Bailey Auditorium.

State Man Charged In Theft at Firm

NEW YORK (AP)—George F. McDermott, 35, of Huntington, Conn., has been charged with stealing \$270,014 his former firm had given him to pay insurance premiums.

of the MHS Round Table Singers, string ensemble, brass choir, and the orchestra. School officials expect a large turnout, and doors will open at 7:30. A limited number of tickets will be available before the program. Proceeds will go toward the purchase of new band uniforms. (Herald photo by Brucevick)

of the MHS Round Table Singers, string ensemble, brass choir, and the orchestra. School officials expect a large turnout, and doors will open at 7:30. A limited number of tickets will be available before the program. Proceeds will go toward the purchase of new band uniforms. (Herald photo by Brucevick)

Weiss Budget Hearing Reset For Wednesday
cancel its budget workshops this year, in favor of separate caucuses by the majority and minority directors. It was the committee that the workshops in past years "were useless," with most of the time lost in wrangling between the two groups.

BITUMINOUS DRIVEWAYS advertisement with text: 'Parking Areas • Gas Stations • Basketball Courts. Now Hooping for Seasonal Work. Early Bird Special. 10% DISCOUNT NOW THRU APRIL 5th. DeMAIO BROTHERS SINCE 1920. CALL: 643-1091'

Burton's SMILING SERVICE advertisement featuring a woman in a patterned coat and text: 'Your Dream of a California SPRING COAT SALE. Famous wools you've dreamed of owning. Smart silhouettes you've dreamed of wearing. At savings you'd hardly dream of finding. \$28. every coat sold for \$40. MANCHESTER CARPET CENTER 311 MAIN ST. 646-2130'

27 MAR 27

Senate Approval Seen On Combined Tax Bid

WASHINGTON (AP) — Sen. ... predict the Senate will approve their bid to combine President Johnson's proposed 10 percent income-tax surcharge with a \$4 billion spending cut. But they concede it's doubtful the House will buy such a plan. The Senate was scheduled to vote today on the combination proposal, which is an amendment to the House-passed bill extending excise taxes on cars and telephone services.

NOTICE PUBLIC HEARING BOARD OF DIRECTORS

Public Hearing Board of Directors of the Town of Manchester, Connecticut. April 3, 1968. 3:00 P.M. BOWEN SCHOOL AUDITORIUM. 141 Princeton Street. Notice is hereby given that in accordance with the provisions of Chapter 9 of the General Statutes of the State of Connecticut, as amended, the Board of Directors of the Town of Manchester will hold a public hearing on the tentative budget of the General Mana...

Red Feather Service

"There is a variety of services agencies in the Greater Hartford area and it can be confusing for you to locate the particular one to help you solve your problem. If you need help in locating the right agency for you, telephone Mrs. Fisher at the Red Feather Information and Referral Service at the Greater Hartford Community Council, Telephone her at 221-4260, Ext. 42, Monday, Tuesday or Thursday mornings."

Vernon Junior High Career Day Set by Hospital April 6

A Career Day for junior high school students and their parents will be held at Rockville General Hospital April 6 from 9 to 12 a.m. Students possibly interested in a career in X-ray and laboratory work are invited to discuss future plans and opportunities with department heads and personnel at the hospital, according to Joseph Mirabito, administrator.

BLACKY THE ANGUS SEZ: Come to Western Beef Mori's Pork Jamboree

Take advantage of the low Pork market, lowest price in 2 years!

SPECIALS

THURSDAY — FRIDAY — SATURDAY

LEAN CORN FED PORK LOINS 44¢ lb

COMBO Contains Roast and Center Chops

FARM FRESH CHICKEN LEGS and BREASTS 35¢ lb

COMBO

CUDAHY BAR S CANNED HAM 5 lb. can \$3.99

Put One Away for Easter

ARMOUR'S STAR SLICED BOILED HAM 89¢ lb

HOME PRIDE'S GERMAN SPECIALTIES KNOCKWURST - BOCKWURST KIMMELWURST 89¢ lb

FREEZER DEPT. HINDS SIDES 65¢ lb 55¢ lb

WESTERN BEEF MART

NOW — 2 Fine Stores To Serve You

Football Star at UConn Among Student Teachers

Fourth graders at the Hebrew Elementary School this month will learn their three R's from a burlly fellow who is better known for his latched toe than his teaching techniques. Roy Lawrence, who held the New England collegiate record for kicking the longest field goal (60 yds.) in one of the 38 United States, will be the guest teacher who will go out in the community and student teach this month.

Road Closed

Finley St. will be closed through traffic beginning today during construction work on the relocation of R. 6.

Ike Accuses Dissenters Of Giving Aid to Enemy

NEW YORK (AP) — Former President Dwight D. Eisenhower accused Vietnam war dissenters of giving aid and comfort to the enemy and says their behavior is probably "making honorable negotiation impossible."

Sweet Adelines Sing at Hospital

The Mountain Laurel Chapter chorus of Sweet Adelines tomorrow at 7 p.m. will entertain staff and members of the patients at the continuing care unit of St. Francis Hospital.

Circus High-Wire Artist Flying Karl Wallenda Guest of Shrine Club

Karl Wallenda of the famous circus family, the Flying Wallendas, will be in Manchester next month as a guest of Omar Shrine Club. He will be the club's speaker at its monthly meeting, Tuesday, April 16, at Willie's Steak House.

Book Cargo Welcome

The American Merchant Marine Library Association will have its book sale at the Shrine Club on Friday, April 19. The sale will feature a wide variety of books on shipping, navigation, and maritime history.

LEGAL NOTICE

The Town Planning Commission of Bolton, Connecticut, will hold a public hearing on the proposed zoning ordinance on Thursday, April 4, 1968 at 8:30 p.m. in the Community Hall for the purpose of hearing the recommendations of the Conservation Commission on the Bolton Open Space Plan.

Why read as they did 100 years ago?



One hundred years ago, people read the way you're reading right now — by word — somewhere around 500 words a minute. And 100 years ago, that kind of reading didn't cause any problems. They could pretty well keep up with what was going on. But today, things are happening so fast that people who try to keep ahead find that they're actually falling behind. There's simply too much to read — too much homework — too many magazines — too many books — too many reports, memos and j.e.t. ads. We're in the middle of an information explosion. What's the solution? There's only one. Learn how to read faster and better. Evelyn Wood has discovered the way, and already over 300,000 people have learned it. So can you.

COME TO A FREE DEMONSTRATION MEETING

(Prior to the start of April classes)

WEST HARTFORD Reading Dynamics Institute 65 S. Main St. Wed., March 27 — 8:30 p.m. Thurs., March 28 — 8:30 p.m. Fri., March 29 — 8:30 p.m.	MANCHESTER Reading Dynamics Institute Senior Cir. Wed., March 27 — 8:00 p.m. Thurs., March 28 — 8:30 p.m. Fri., March 29 — 8:30 p.m.	PLAINVILLE YMCA 149 Farmington Ave. Thurs., March 28 — 8:00 p.m. Fri., March 29 — 8:30 p.m.
---	---	---

EVELYN WOOD Reading Dynamics Institute

45 South Main Street, West Hartford / For information call 232-4455 / Now you may pay tuition with Connecticut Charge Card

PROGRESSIVE SALE OF JEWELRY 60% OFF THIS WEEK

LAST WEEK — LAST CHANCE HURRY HURRY HURRY

NECKLACES EARRINGS PINS BRACELETS LEATHER GOODS PEARLS WATCH BANDS

MANY FINE ITEMS TO CHOOSE FROM 60% OFF THIS WEEK

CHARGE IT WITH MANCHESTER NATIONAL

the Treasure Shop Fine Jewellers For Generations

S. O. M. B. SATISFACTION OR MONEY BACK

MANCHESTER PARKADE

WESTERN BEEF MART

NOW — 2 Fine Stores To Serve You

Columbia Ave., Willimantic	Thurs. and Fri. till 9
81 Tolland Tpke., Manchester	Open Tues., Wed., Sat. till 8

Your Gift Gallery

935 MAIN STREET - AT WATKINS TELEPHONE 643-5171

Wh-o-o Wh-o-o has the owls?

Phi Bates

Phi Bates Classics... the distinguished shoe shown is expertly crafted of genuine Briarhide calf-uppers with a continental flair achieved by the low, handsewn lines. Traditionally styled, equally appropriate for dress or business. Fully leather lined, plus the exclusive Bates-Flex cushioned insole construction designed for instant comfort. Your choice of Black Forest Brown or Black at... \$4.95

Get that 'strangers-in-the-night' feeling in Forward Fashion Suits by 'Botany' 500

Come on strong with the flattery of the Daroff slim silhouette. The last word in elegant color... exclusive fabrics... new styling. See the ultimate in tailoring by 'Botany' 500. Enjoy our personal fashion guidance... come on strong! Forward Fashion Suits. Forward Fashion Suits \$79.95... Sportcoats \$55.00... Sacks \$18.95

'BOTANY' 500 tailored by DAROFF

Regal men's shop

THE MARVEL OF MAIN STREET! 901-907 MAIN STREET, MANCHESTER OPEN MONDAY THRU SATURDAY 9:30 TO 9:30 THURSDAY 9:30 TO 9:00

Open a Regal Charge Account Today Connecticut Bank and Hartford National Charge Also Accepted

Vernon Radio Tower Variance Denied

A request by Richard Breaux of Vernon for a variance to build a radio tower on a parcel of land owned by him was denied by the Zoning Board of Appeals.

The board met in executive session last night to review arguments pro and con presented at a public hearing held last Tuesday.

When asked today if Breaux had any plan for further action on the station, his attorney, Robert Kerensky, said he had not yet heard of the action taken by the Board of Appeals.

Breaux had hoped to introduce station WYNY on the site of the old Vernon Bureau at 84 Park St., tel. 875-3138 or 643-9711.

The hearing, representatives of 14 area families attended and expressed their views, all in opposition to the station and towers being erected to the rear of their homes.

Breaux is now at the hearing by Atty. Kerensky, who spent about \$12,000 over a period of seven years on legal and engineering work in connection with obtaining his Federal Communications Commission license.

This license applied only to the specific plans for the station. Breaux was pointed out to the hearing new plans for a different location.

Breaux had hoped to introduce station WYNY on the site of the old Vernon Bureau at 84 Park St., tel. 875-3138 or 643-9711.

At the hearing the property owners cited several reasons why the station should not be allowed to locate in the proposed area.

South Windsor School Panel Hears Outline Of Program in Business

An explanation of what the Business Department of the girls are very well prepared for whatever business they have chosen following this course at South Windsor High School.

The Business Department of the girls are very well prepared for whatever business they have chosen following this course at South Windsor High School.

The Business Department of the girls are very well prepared for whatever business they have chosen following this course at South Windsor High School.

The Business Department of the girls are very well prepared for whatever business they have chosen following this course at South Windsor High School.

The Business Department of the girls are very well prepared for whatever business they have chosen following this course at South Windsor High School.

The Business Department of the girls are very well prepared for whatever business they have chosen following this course at South Windsor High School.

The Business Department of the girls are very well prepared for whatever business they have chosen following this course at South Windsor High School.

The Business Department of the girls are very well prepared for whatever business they have chosen following this course at South Windsor High School.

The Business Department of the girls are very well prepared for whatever business they have chosen following this course at South Windsor High School.

Attention! READING IMPROVEMENT CLASSES

Classes for ELEMENTARY and HIGH SCHOOL students in Phonics, Reading, Spelling, Vocabulary, Study Skills, Comprehension, Vocabulary, Speed, College Board Test Preparation and General Reading Efficiency.

Classes for ELEMENTARY and HIGH SCHOOL students in Phonics, Reading, Spelling, Vocabulary, Study Skills, Comprehension, Vocabulary, Speed, College Board Test Preparation and General Reading Efficiency.

Classes for ELEMENTARY and HIGH SCHOOL students in Phonics, Reading, Spelling, Vocabulary, Study Skills, Comprehension, Vocabulary, Speed, College Board Test Preparation and General Reading Efficiency.

Classes for ELEMENTARY and HIGH SCHOOL students in Phonics, Reading, Spelling, Vocabulary, Study Skills, Comprehension, Vocabulary, Speed, College Board Test Preparation and General Reading Efficiency.

Classes for ELEMENTARY and HIGH SCHOOL students in Phonics, Reading, Spelling, Vocabulary, Study Skills, Comprehension, Vocabulary, Speed, College Board Test Preparation and General Reading Efficiency.

Classes for ELEMENTARY and HIGH SCHOOL students in Phonics, Reading, Spelling, Vocabulary, Study Skills, Comprehension, Vocabulary, Speed, College Board Test Preparation and General Reading Efficiency.

Classes for ELEMENTARY and HIGH SCHOOL students in Phonics, Reading, Spelling, Vocabulary, Study Skills, Comprehension, Vocabulary, Speed, College Board Test Preparation and General Reading Efficiency.

Classes for ELEMENTARY and HIGH SCHOOL students in Phonics, Reading, Spelling, Vocabulary, Study Skills, Comprehension, Vocabulary, Speed, College Board Test Preparation and General Reading Efficiency.

Classes for ELEMENTARY and HIGH SCHOOL students in Phonics, Reading, Spelling, Vocabulary, Study Skills, Comprehension, Vocabulary, Speed, College Board Test Preparation and General Reading Efficiency.

In New Haven Lack of Aldermen Approval May Cancel Renewal Plans

NEW HAVEN (AP)—Two of the city's largest urban renewal programs may be canceled Monday.

Two of the city's largest urban renewal programs may be canceled Monday.

Two of the city's largest urban renewal programs may be canceled Monday.

Two of the city's largest urban renewal programs may be canceled Monday.

Two of the city's largest urban renewal programs may be canceled Monday.

Two of the city's largest urban renewal programs may be canceled Monday.

Two of the city's largest urban renewal programs may be canceled Monday.

Two of the city's largest urban renewal programs may be canceled Monday.

Two of the city's largest urban renewal programs may be canceled Monday.

Scots Raise Palms Inverness, Scotland

At Inverness, Scotland, the Scots are raising palms. The Scots are raising palms.

At Inverness, Scotland, the Scots are raising palms. The Scots are raising palms.

At Inverness, Scotland, the Scots are raising palms. The Scots are raising palms.

At Inverness, Scotland, the Scots are raising palms. The Scots are raising palms.

At Inverness, Scotland, the Scots are raising palms. The Scots are raising palms.

At Inverness, Scotland, the Scots are raising palms. The Scots are raising palms.

At Inverness, Scotland, the Scots are raising palms. The Scots are raising palms.

At Inverness, Scotland, the Scots are raising palms. The Scots are raising palms.

At Inverness, Scotland, the Scots are raising palms. The Scots are raising palms.

FUEL OIL 15.4 R. B. REGIUS FUEL OIL 649-4708

200 Gal. Min. C.O.D. 24-Hour Burner Service!

200 Gal. Min. C.O.D. 24-Hour Burner Service!

200 Gal. Min. C.O.D. 24-Hour Burner Service!

200 Gal. Min. C.O.D. 24-Hour Burner Service!

200 Gal. Min. C.O.D. 24-Hour Burner Service!

200 Gal. Min. C.O.D. 24-Hour Burner Service!

200 Gal. Min. C.O.D. 24-Hour Burner Service!

200 Gal. Min. C.O.D. 24-Hour Burner Service!

200 Gal. Min. C.O.D. 24-Hour Burner Service!

Legal Notice INVITATION TO BID

Buildings (e) and/or Structure (s) as more fully described in Form No. CON 1192.

Buildings (e) and/or Structure (s) as more fully described in Form No. CON 1192.

Buildings (e) and/or Structure (s) as more fully described in Form No. CON 1192.

Buildings (e) and/or Structure (s) as more fully described in Form No. CON 1192.

Buildings (e) and/or Structure (s) as more fully described in Form No. CON 1192.

Buildings (e) and/or Structure (s) as more fully described in Form No. CON 1192.

Buildings (e) and/or Structure (s) as more fully described in Form No. CON 1192.

Buildings (e) and/or Structure (s) as more fully described in Form No. CON 1192.

Archbishop Of Atlanta Dies at 56

Archbishop Hallman was graduated from the University of Notre Dame in 1932 and studied for the priesthood at St. Mary's Seminary in Cleveland, Ohio.

Archbishop Hallman was graduated from the University of Notre Dame in 1932 and studied for the priesthood at St. Mary's Seminary in Cleveland, Ohio.

Archbishop Hallman was graduated from the University of Notre Dame in 1932 and studied for the priesthood at St. Mary's Seminary in Cleveland, Ohio.

Archbishop Hallman was graduated from the University of Notre Dame in 1932 and studied for the priesthood at St. Mary's Seminary in Cleveland, Ohio.

Archbishop Hallman was graduated from the University of Notre Dame in 1932 and studied for the priesthood at St. Mary's Seminary in Cleveland, Ohio.

Archbishop Hallman was graduated from the University of Notre Dame in 1932 and studied for the priesthood at St. Mary's Seminary in Cleveland, Ohio.

Archbishop Hallman was graduated from the University of Notre Dame in 1932 and studied for the priesthood at St. Mary's Seminary in Cleveland, Ohio.

Archbishop Hallman was graduated from the University of Notre Dame in 1932 and studied for the priesthood at St. Mary's Seminary in Cleveland, Ohio.

They all love their Jumping Jacks for spring!

They all love their Jumping Jacks for spring!

They all love their Jumping Jacks for spring!

They all love their Jumping Jacks for spring!

They all love their Jumping Jacks for spring!

They all love their Jumping Jacks for spring!

They all love their Jumping Jacks for spring!

They all love their Jumping Jacks for spring!

Easter treasures for little girls

Easter treasures for little girls

Easter treasures for little girls

Easter treasures for little girls

Easter treasures for little girls

Easter treasures for little girls

Easter treasures for little girls

Easter treasures for little girls

Easter treasures for little girls

don't lift a finger unless you're gloved in 'Slim Hand'

don't lift a finger unless you're gloved in 'Slim Hand'

don't lift a finger unless you're gloved in 'Slim Hand'

don't lift a finger unless you're gloved in 'Slim Hand'

don't lift a finger unless you're gloved in 'Slim Hand'

don't lift a finger unless you're gloved in 'Slim Hand'

don't lift a finger unless you're gloved in 'Slim Hand'

don't lift a finger unless you're gloved in 'Slim Hand'

don't lift a finger unless you're gloved in 'Slim Hand'

Deft seaming gives your new Spring subtle fit, a definite new fashion look!

Deft seaming gives your new Spring subtle fit, a definite new fashion look!

Deft seaming gives your new Spring subtle fit, a definite new fashion look!

Deft seaming gives your new Spring subtle fit, a definite new fashion look!

Deft seaming gives your new Spring subtle fit, a definite new fashion look!

Deft seaming gives your new Spring subtle fit, a definite new fashion look!

Deft seaming gives your new Spring subtle fit, a definite new fashion look!

Deft seaming gives your new Spring subtle fit, a definite new fashion look!

Deft seaming gives your new Spring subtle fit, a definite new fashion look!

27

MAR

27

Fuller Chosen For May Term

Edwin H. May of Wethersfield, candidate for the GOP nomination for U.S. senator, has announced the appointment of Alfred C. Fuller, board chairman of the Fuller Drug Co., as chairman of his campaign finance committee.

Three Teachers Leaving System

The Board of Education accepted resignations of three Manchester teachers at its meeting Monday, all effective at the end of the school year.

Hospital Notes

All evening visiting hours end at 8 p.m., and start in the various units at 10:30 a.m.; self service unit 10 a.m.; Crowell House, 8 p.m. weekdays, 3 p.m. weekends and holidays; private rooms, 10 a.m.; semi-private rooms, 3 p.m.; special care in any room; immediate family only, with five-minute limitation. Afternoon visiting hours in obstetrics are 3 to 4 p.m., then begin again at 7 p.m. Visitors are asked not to smoke in patients' rooms. No more than two visitors at one time per patient.

Patients Today: 302

ADMITTED YESTERDAY: Robert Arundel, 89 Phelps Rd., Marcus Bottomly, Amston; Clinton Bragg, 66 Dartmouth Rd., Forrest Bush, Stamford Springs; Diane Carl, East Hartford; Mrs. Fabiola Domingue, Abbott Rd., Ellington; Mrs. Mary Doonan, 432 W. Middle Tpke., Apt. 116; Mrs. Ruby Epperson, Lake St., Coventry; Mrs. Joyce Feldon, 65 Hawthorne St.; Mrs. Joan Hastings, 34 Blyue Rd.; Robert Jenks, Tolland; Robert Johnstone, 64 Overlook Rd., Wapping.

Also, Kathleen Macrelesnik, RFD 3, Coventry; Mrs. Olga Martocchio, East Hartford; Mary Myroli, 51 Hazy Lane, Rockville; Edmund Parent, 41 Statler St., Wapping; Mrs. Sandra and Kim Fourke, Willimantic; Robert Ray, 89 Birch St.; Mrs. Gayle Rocks, Montauk Dr., Vernon; Mrs. Mary Hodorik, Eastonbury; Mrs. Valerie Saglio, 41 Elgin Rd.; Mrs. Augustus Sanford, 130 Park St., Apt. 2A; Mrs. Ellen Sasse, 62 Ardmore Rd.; Mrs. Edith Schultz, Glastonbury.

BIRTHS YESTERDAY:

A son to Mr. and Mrs. Melvin Stollenberg, 59 S. Hawthorne St.; a daughter to Mr. and Mrs. Everett McCollum, 701 Main St.; a son to Mr. and Mrs. Keith Hucatis, Vernon Garden Apts., Rockville; a daughter to Mr. and Mrs. Paul Fante, Broad Brook; a daughter to Mr. and Mrs. Frederick Chase, 138 Windorsville Rd., South Windsor.

DISCHARGED YESTERDAY:

Alexa Berger, 44 Scott Dr.; Mrs. Lois Tull, 432 Parker St.; Victor Schmidt, 72 Maple St.; Mrs. Jean Eichner, South St., Coventry; Michael Sauter, 39 Pioneer Circle; Deanne Risley, 341 Lydall St.; Roxanne Grover, Hazardsville; John McCabe, Lynnwood Dr., Bolton; Mrs. Mary Richardson, East Windsor Hill; Norman Johnson, Lake St., Vernon; Joanne Chevette, 269 Hilltown Rd.; Eugene Dar-

Spotter Plane Like Riding In Coaster

(Continued from Page One) but satisfactory secondary explosion. Circling Highway 9 again, he spotted a half dozen bunker entrances by the roadside. "I've been looking for those," he said, "that's where their repair crews hold up during the day-time." Shortly thereafter, in an unusual display of accuracy, two F4 jets from Cam Ranh Bay flashed in at right angles to Highway 9 and put bombs right on the road and bunkers as well.

Three Teachers Leaving System

The Board of Education accepted resignations of three Manchester teachers at its meeting Monday, all effective at the end of the school year.

Hospital Notes

All evening visiting hours end at 8 p.m., and start in the various units at 10:30 a.m.; self service unit 10 a.m.; Crowell House, 8 p.m. weekdays, 3 p.m. weekends and holidays; private rooms, 10 a.m.; semi-private rooms, 3 p.m.; special care in any room; immediate family only, with five-minute limitation. Afternoon visiting hours in obstetrics are 3 to 4 p.m., then begin again at 7 p.m. Visitors are asked not to smoke in patients' rooms. No more than two visitors at one time per patient.

Patients Today: 302

ADMITTED YESTERDAY: Robert Arundel, 89 Phelps Rd., Marcus Bottomly, Amston; Clinton Bragg, 66 Dartmouth Rd., Forrest Bush, Stamford Springs; Diane Carl, East Hartford; Mrs. Fabiola Domingue, Abbott Rd., Ellington; Mrs. Mary Doonan, 432 W. Middle Tpke., Apt. 116; Mrs. Ruby Epperson, Lake St., Coventry; Mrs. Joyce Feldon, 65 Hawthorne St.; Mrs. Joan Hastings, 34 Blyue Rd.; Robert Jenks, Tolland; Robert Johnstone, 64 Overlook Rd., Wapping.

BIRTHS YESTERDAY:

A son to Mr. and Mrs. Melvin Stollenberg, 59 S. Hawthorne St.; a daughter to Mr. and Mrs. Everett McCollum, 701 Main St.; a son to Mr. and Mrs. Keith Hucatis, Vernon Garden Apts., Rockville; a daughter to Mr. and Mrs. Paul Fante, Broad Brook; a daughter to Mr. and Mrs. Frederick Chase, 138 Windorsville Rd., South Windsor.

DISCHARGED YESTERDAY:

Alexa Berger, 44 Scott Dr.; Mrs. Lois Tull, 432 Parker St.; Victor Schmidt, 72 Maple St.; Mrs. Jean Eichner, South St., Coventry; Michael Sauter, 39 Pioneer Circle; Deanne Risley, 341 Lydall St.; Roxanne Grover, Hazardsville; John McCabe, Lynnwood Dr., Bolton; Mrs. Mary Richardson, East Windsor Hill; Norman Johnson, Lake St., Vernon; Joanne Chevette, 269 Hilltown Rd.; Eugene Dar-

ADMITTED YESTERDAY:

Robert Arundel, 89 Phelps Rd., Marcus Bottomly, Amston; Clinton Bragg, 66 Dartmouth Rd., Forrest Bush, Stamford Springs; Diane Carl, East Hartford; Mrs. Fabiola Domingue, Abbott Rd., Ellington; Mrs. Mary Doonan, 432 W. Middle Tpke., Apt. 116; Mrs. Ruby Epperson, Lake St., Coventry; Mrs. Joyce Feldon, 65 Hawthorne St.; Mrs. Joan Hastings, 34 Blyue Rd.; Robert Jenks, Tolland; Robert Johnstone, 64 Overlook Rd., Wapping.

Nurses Attend Region Parley

Mrs. Burt LaCoe and Mrs. John Muszkovik, staff nurses of the Manchester Public Health Nursing Association, will attend a spring regional educational program for professional nurses Thursday, April 4, at 9:45 a.m. at the Connecticut General Life Insurance Co., Bloomfield.

Girl Scout Notes

Senior Girl Scout Troop 2 of Center Congregational Church has been spending its regular meeting night receiving training as Program Service Aides which involves helping leaders with troops of younger girls.

Patents Today: 302

ADMITTED YESTERDAY: Robert Arundel, 89 Phelps Rd., Marcus Bottomly, Amston; Clinton Bragg, 66 Dartmouth Rd., Forrest Bush, Stamford Springs; Diane Carl, East Hartford; Mrs. Fabiola Domingue, Abbott Rd., Ellington; Mrs. Mary Doonan, 432 W. Middle Tpke., Apt. 116; Mrs. Ruby Epperson, Lake St., Coventry; Mrs. Joyce Feldon, 65 Hawthorne St.; Mrs. Joan Hastings, 34 Blyue Rd.; Robert Jenks, Tolland; Robert Johnstone, 64 Overlook Rd., Wapping.

BIRTHS YESTERDAY:

A son to Mr. and Mrs. Melvin Stollenberg, 59 S. Hawthorne St.; a daughter to Mr. and Mrs. Everett McCollum, 701 Main St.; a son to Mr. and Mrs. Keith Hucatis, Vernon Garden Apts., Rockville; a daughter to Mr. and Mrs. Paul Fante, Broad Brook; a daughter to Mr. and Mrs. Frederick Chase, 138 Windorsville Rd., South Windsor.

DISCHARGED YESTERDAY:

Alexa Berger, 44 Scott Dr.; Mrs. Lois Tull, 432 Parker St.; Victor Schmidt, 72 Maple St.; Mrs. Jean Eichner, South St., Coventry; Michael Sauter, 39 Pioneer Circle; Deanne Risley, 341 Lydall St.; Roxanne Grover, Hazardsville; John McCabe, Lynnwood Dr., Bolton; Mrs. Mary Richardson, East Windsor Hill; Norman Johnson, Lake St., Vernon; Joanne Chevette, 269 Hilltown Rd.; Eugene Dar-

ADMITTED YESTERDAY:

Robert Arundel, 89 Phelps Rd., Marcus Bottomly, Amston; Clinton Bragg, 66 Dartmouth Rd., Forrest Bush, Stamford Springs; Diane Carl, East Hartford; Mrs. Fabiola Domingue, Abbott Rd., Ellington; Mrs. Mary Doonan, 432 W. Middle Tpke., Apt. 116; Mrs. Ruby Epperson, Lake St., Coventry; Mrs. Joyce Feldon, 65 Hawthorne St.; Mrs. Joan Hastings, 34 Blyue Rd.; Robert Jenks, Tolland; Robert Johnstone, 64 Overlook Rd., Wapping.

Jerusalem's 'New' Theater Has a Hidden Past

JERUSALEM (AP) — Israeli actors who recently opened Jerusalem's newest theater in a building as ancient as the holy city itself are trying to solve an historical mystery—the building's colorful past.

Girl Scout Notes

Senior Girl Scout Troop 2 of Center Congregational Church has been spending its regular meeting night receiving training as Program Service Aides which involves helping leaders with troops of younger girls.

Patents Today: 302

ADMITTED YESTERDAY: Robert Arundel, 89 Phelps Rd., Marcus Bottomly, Amston; Clinton Bragg, 66 Dartmouth Rd., Forrest Bush, Stamford Springs; Diane Carl, East Hartford; Mrs. Fabiola Domingue, Abbott Rd., Ellington; Mrs. Mary Doonan, 432 W. Middle Tpke., Apt. 116; Mrs. Ruby Epperson, Lake St., Coventry; Mrs. Joyce Feldon, 65 Hawthorne St.; Mrs. Joan Hastings, 34 Blyue Rd.; Robert Jenks, Tolland; Robert Johnstone, 64 Overlook Rd., Wapping.

BIRTHS YESTERDAY:

A son to Mr. and Mrs. Melvin Stollenberg, 59 S. Hawthorne St.; a daughter to Mr. and Mrs. Everett McCollum, 701 Main St.; a son to Mr. and Mrs. Keith Hucatis, Vernon Garden Apts., Rockville; a daughter to Mr. and Mrs. Paul Fante, Broad Brook; a daughter to Mr. and Mrs. Frederick Chase, 138 Windorsville Rd., South Windsor.

DISCHARGED YESTERDAY:

Alexa Berger, 44 Scott Dr.; Mrs. Lois Tull, 432 Parker St.; Victor Schmidt, 72 Maple St.; Mrs. Jean Eichner, South St., Coventry; Michael Sauter, 39 Pioneer Circle; Deanne Risley, 341 Lydall St.; Roxanne Grover, Hazardsville; John McCabe, Lynnwood Dr., Bolton; Mrs. Mary Richardson, East Windsor Hill; Norman Johnson, Lake St., Vernon; Joanne Chevette, 269 Hilltown Rd.; Eugene Dar-

ADMITTED YESTERDAY:

Robert Arundel, 89 Phelps Rd., Marcus Bottomly, Amston; Clinton Bragg, 66 Dartmouth Rd., Forrest Bush, Stamford Springs; Diane Carl, East Hartford; Mrs. Fabiola Domingue, Abbott Rd., Ellington; Mrs. Mary Doonan, 432 W. Middle Tpke., Apt. 116; Mrs. Ruby Epperson, Lake St., Coventry; Mrs. Joyce Feldon, 65 Hawthorne St.; Mrs. Joan Hastings, 34 Blyue Rd.; Robert Jenks, Tolland; Robert Johnstone, 64 Overlook Rd., Wapping.

Advertisement for SIMMONS SHOES featuring various styles like 'Joyce', 'New Bolero', and 'Soft Crush' with prices and descriptions.

Advertisement for Grants clothing featuring 'SHIRT SHIFTS' and 'EASY-CARE SNOOZE SHIRT' with sale prices and descriptions.

Advertisement for SIMMONS SHOES featuring 'MANCHESTER PARKADE - NEW SECTION' and 'FINE SHOES FOR ALL THE FAMILY'.

Advertisement for Grants clothing featuring 'EASTER CAKES', 'EASTER STENCILS', and 'ICE CREAM COMPANY'.

Advertisement for Grants clothing featuring 'EASTER CAKES', 'EASTER STENCILS', and 'ICE CREAM COMPANY'.

Advertisement for Grants clothing featuring 'EASTER CAKES', 'EASTER STENCILS', and 'ICE CREAM COMPANY'.

London's Park Benches Don't Appeal to Pianist

By DONALD M. McNICOLL
Associated Press Writer

LONDON (AP) — Raymond Leventhal, perhaps the serious music world's top expert on sleeping on park benches, cast a critical eye at the benches in London's Hyde Park.

"They don't look at all comfortable," he remarked, maintaining his brisk pace in the wintry sunshine.

"I always enjoy a walk in the beautiful London parks, but when I see the benches I keep walking."

Leventhal, American classical pianist who looks rugged enough to be a heavyweight boxer, became an expert on park bench slumber in his youth. As a penniless wanderer in America and Europe, he explained, he spent quite a few nights on the state-wrapped sheets of newspaper.

In Britain for a series of concerts and television appearances, he doesn't have to worry about the relative comfort of the country's park benches any more. Today he is famous and sleeps in the best hotels.

To most music lovers on this side of the Atlantic, Leventhal has the reputation of playing unusual and out of the ordinary pieces. But on his present concert tour, he has chosen to play some of the most famous masterpieces, including Beethoven's "Moonlight Sonata," Chopin's "Funeral March Sonata," and the last piano transcription of Schubert's "Serenade."

Might not some people regard the program as a trifle hackneyed?

"Hackneyed," protested Leventhal. "For me there is no hackneyed music, only banalities or bad music. For me the beautiful remains eternally fresh. I can remember the first time I heard these masterpieces and I still recall the thrill and mystery they evoked because they still arouse those feelings in me every time I hear them or play them."

Leventhal is particularly renowned as the rediscoverer and interpreter of the neglected French composer Charles-Valentin Alkan. He explained that he had been interested in Alkan since the age of 15, after he had read about him.

"He was one of the most important completely neglected composers of the 19th century," Leventhal said, "I have never considered him another Beethoven, but his music has something important to convey to audiences of today, and the proof is that people enjoy the music when I play it."

But it was not only that, Leventhal said. "He was not a romantic in the way that his contemporaries were romantic. He had his own kind of romanticism, and was one of the great originals."

"He anticipated many later

WHO GETS HURT
FOOTBALL

CHICAGO (AP) — A survey at three of the Big Ten universities suggests that the major causes of football injuries can be traced to the skill level of the player, amount of exposure and the National Safety Congress was told by Robert J. Moore, a graduate student at the University of Illinois, that at least four other factors—physical conditioning, playing conditions, equipment and psychological factors—also play a contributing role.

He said that players on first and fourth teams, those with the most and the least skills, had the most injuries.

First-team members accumulate the majority of the playing time in regulation games, thus exposing themselves to more chance of injury. Fourth-team members are probably overexposed in practice.

The injury rate was highest among sophomores who have had the least experience.

Custom Home Design
Manchester
Bliss Print & Supply Inc.
600 Hartford Rd.
Manchester, Conn.
628-8888
Rockville Etc. Est. 1485

LENTEN SPECIALS
Every West and Frt.
All Pies and Pastries
Are Baked On The
Premises!
Gaslight
Restaurant
80 Oak St., Manchester



Your kind of shoe—
Air Step.

A captivating bow-pump designed for elegance. Beautiful calf with softly draped grosgrain bow and collar trim.

GUSTAFSON'S SHOE STORE
705 MAIN STREET MANCHESTER

KING'S

SELF-SERVICE DEPT STORE

Broad Street
Manchester
• Open Daily 10 to 10
• Parking for 1,000's of Cars!

Better Quality.. Better Value.. Better Selection for all the Family!
Everything for Easter at Savings!

for Spring into Summer
2 Seasons' Rayon and Cotton Bonded Shift
10.97

Beautiful basic in textured rayon-and-cotton, bonded for lasting shapeliness. Bonded collar, dot seam yoke detail, neat short sleeves. Wear it with its own golden knot, pin, or add your own accessories. Make, white or green, sizes 12 to 20.

Frilly Blouses, Trim Shirts to team with Dirndls, Minis, Culottes!

A. Romantic, lace-lavished long sleeved blouse in pristine white, permanent press Dacron polyester-cotton. Sizes 32 to 38. **3.78**

B. Fashion-right dirndl in floral prints, Dacron polyester-cotton voile, fully lined and belted. Black only. 8 to 16. **4.99**

C. Tapered, French-cuffed body shirt with new fashion collar. 100% Amish tricot-crope in white, beige, blue, pink. 32 to 38. **3.99**

D. Bonded textured rayon mini with military buckle belt, two dashing pockets. Navy, brown or turquoise. Sizes 8 to 16. **5.57**

The Big Zip! Side-Closing MINI COAT
15.97

Dashing side-zipped coat in big, bold checks of gray and white. Solid color stand-up collar and pocket trim. 100% acrylic, laminated for shape-keeping. Sizes 8 to 16.

Boys' Fine Tailored Sport Coats
8.99

Handsome gen plaids and tattersalls in 80% Dacron polyester-20% cotton, or smart solid color hosiery in 80% rayon-20% acetate. Breast pocket, 2 hacking pockets. Sizes 10 to 18.

Permanent Press Dress Slacks
4.48

Husky Sizes 8 to 18 . . . **4.78**

Popular Ivy style in a solid oxford weave blend of 45% Vibreil, 30% acetate, 25% nylon. 4 pockets. White, olive, gray, black or blue. 8 to 18 regular, 8 to 10 slim.

Girls' 7 to 14 Easter Suits
8.97

3-pc. bonded cotton acrylic with contrast trim on the jaunty jacket and separate shell. Royal, red, just one from our outstanding collection in solid colors, plaids and checks.

Tots' Reversible Coat and Hat Set
7.97

Boys' or girls' style in smart laminated checked cotton that reverses to solid color Avanti rayon-cotton poplin. 2 pockets, matching bonnet or eton cap. Blue, green, orange, navy. Sizes 2 to 4.

TV-Radio Tonight

Television

5:00	5:10 Perry Mason	(C)	Communication Skills
5:15	5:20 The Dick Van Dyke Show	(C)	News Weather (C)
5:25	5:30 The Dick Van Dyke Show	(C)	60 Minutes (C)
5:30	5:35 The Dick Van Dyke Show	(C)	60 Minutes (C)
5:35	5:40 The Dick Van Dyke Show	(C)	60 Minutes (C)
5:40	5:45 The Dick Van Dyke Show	(C)	60 Minutes (C)
5:45	5:50 The Dick Van Dyke Show	(C)	60 Minutes (C)
5:50	5:55 The Dick Van Dyke Show	(C)	60 Minutes (C)
5:55	6:00 The Dick Van Dyke Show	(C)	60 Minutes (C)
6:00	6:05 The Dick Van Dyke Show	(C)	60 Minutes (C)
6:05	6:10 The Dick Van Dyke Show	(C)	60 Minutes (C)
6:10	6:15 The Dick Van Dyke Show	(C)	60 Minutes (C)
6:15	6:20 The Dick Van Dyke Show	(C)	60 Minutes (C)
6:20	6:25 The Dick Van Dyke Show	(C)	60 Minutes (C)
6:25	6:30 The Dick Van Dyke Show	(C)	60 Minutes (C)
6:30	6:35 The Dick Van Dyke Show	(C)	60 Minutes (C)
6:35	6:40 The Dick Van Dyke Show	(C)	60 Minutes (C)
6:40	6:45 The Dick Van Dyke Show	(C)	60 Minutes (C)
6:45	6:50 The Dick Van Dyke Show	(C)	60 Minutes (C)
6:50	6:55 The Dick Van Dyke Show	(C)	60 Minutes (C)
6:55	7:00 The Dick Van Dyke Show	(C)	60 Minutes (C)
7:00	7:05 The Dick Van Dyke Show	(C)	60 Minutes (C)
7:05	7:10 The Dick Van Dyke Show	(C)	60 Minutes (C)
7:10	7:15 The Dick Van Dyke Show	(C)	60 Minutes (C)
7:15	7:20 The Dick Van Dyke Show	(C)	60 Minutes (C)
7:20	7:25 The Dick Van Dyke Show	(C)	60 Minutes (C)
7:25	7:30 The Dick Van Dyke Show	(C)	60 Minutes (C)
7:30	7:35 The Dick Van Dyke Show	(C)	60 Minutes (C)
7:35	7:40 The Dick Van Dyke Show	(C)	60 Minutes (C)
7:40	7:45 The Dick Van Dyke Show	(C)	60 Minutes (C)
7:45	7:50 The Dick Van Dyke Show	(C)	60 Minutes (C)
7:50	7:55 The Dick Van Dyke Show	(C)	60 Minutes (C)
7:55	8:00 The Dick Van Dyke Show	(C)	60 Minutes (C)

Radio

5:00	5:10 Perry Mason	(C)	Communication Skills
5:15	5:20 The Dick Van Dyke Show	(C)	News Weather (C)
5:25	5:30 The Dick Van Dyke Show	(C)	60 Minutes (C)
5:30	5:35 The Dick Van Dyke Show	(C)	60 Minutes (C)
5:35	5:40 The Dick Van Dyke Show	(C)	60 Minutes (C)
5:40	5:45 The Dick Van Dyke Show	(C)	60 Minutes (C)
5:45	5:50 The Dick Van Dyke Show	(C)	60 Minutes (C)
5:50	5:55 The Dick Van Dyke Show	(C)	60 Minutes (C)
5:55	6:00 The Dick Van Dyke Show	(C)	60 Minutes (C)
6:00	6:05 The Dick Van Dyke Show	(C)	60 Minutes (C)
6:05	6:10 The Dick Van Dyke Show	(C)	60 Minutes (C)
6:10	6:15 The Dick Van Dyke Show	(C)	60 Minutes (C)
6:15	6:20 The Dick Van Dyke Show	(C)	60 Minutes (C)
6:20	6:25 The Dick Van Dyke Show	(C)	60 Minutes (C)
6:25	6:30 The Dick Van Dyke Show	(C)	60 Minutes (C)
6:30	6:35 The Dick Van Dyke Show	(C)	60 Minutes (C)
6:35	6:40 The Dick Van Dyke Show	(C)	60 Minutes (C)
6:40	6:45 The Dick Van Dyke Show	(C)	60 Minutes (C)
6:45	6:50 The Dick Van Dyke Show	(C)	60 Minutes (C)
6:50	6:55 The Dick Van Dyke Show	(C)	60 Minutes (C)
6:55	7:00 The Dick Van Dyke Show	(C)	60 Minutes (C)
7:00	7:05 The Dick Van Dyke Show	(C)	60 Minutes (C)
7:05	7:10 The Dick Van Dyke Show	(C)	60 Minutes (C)
7:10	7:15 The Dick Van Dyke Show	(C)	60 Minutes (C)
7:15	7:20 The Dick Van Dyke Show	(C)	60 Minutes (C)
7:20	7:25 The Dick Van Dyke Show	(C)	60 Minutes (C)
7:25	7:30 The Dick Van Dyke Show	(C)	60 Minutes (C)
7:30	7:35 The Dick Van Dyke Show	(C)	60 Minutes (C)
7:35	7:40 The Dick Van Dyke Show	(C)	60 Minutes (C)
7:40	7:45 The Dick Van Dyke Show	(C)	60 Minutes (C)
7:45	7:50 The Dick Van Dyke Show	(C)	60 Minutes (C)
7:50	7:55 The Dick Van Dyke Show	(C)	60 Minutes (C)
7:55	8:00 The Dick Van Dyke Show	(C)	60 Minutes (C)

Group Told Of Salt in Baby Food

Los Angeles Times — Washington Post News Service SAN FRANCISCO — Too much salt in baby foods may be precipitating babies to high blood pressure and premature heart attacks in adult life, a Tennessee nutritionist warned at a dairy council of California meeting this weekend.

Baby food manufacturers have adopted the practice of salting their products to suit the tastes of the mothers, rather than the health needs of the baby, said Dr. George Vernon Mann, associate professor of medicine at Vanderbilt University, Nashville.

Pediatrists first became aware of the situation when they noticed edema (abnormal accumulation of fluids) in young infants.

In tracking down the cause of the edema, they found the manufacturers were salting the food beyond the infants' needs. One effect of salt is to cause fluid accumulation.

The companies added salt after learning that mothers often taste the first spoonful of food themselves. They often found it too bland for their taste, so they added salt.

Apparently everybody has been ignoring the fact that infants are unable to tell whether their food has enough salt because their salt-tasting buds have not developed yet.

Furthermore, Dr. Mann said, for use on winding or rolling an infant's kidneys are not able to cope with the salt accumulation until three to six months of detecting vehicles, the distance between them, velocities and direction, and displays for giving passing instructions to drivers.

MANUFACTURERS KNITTING MILL CLEARANCE

OPEN TO THE PUBLIC THURS. 9:30 A.M.

850 MISSES' ORLON SWEATERS \$3.

FIRST QUALITY, LONG SLEEVE CARDIGAN STYLES IN REGULAR AND BULKY-KNITS. SPRING COLORS. SIZES 34 to 40. REG. RETAIL \$6.00

ROOSEVELT MILLS
MANUFACTURERS OF NAME-BRAND SWEATERS SINCE 1941
OPEN DAILY 11:30 — WED., THURS., FRI. 11:30 P.M.

MILL STORE: 215 E. MAIN ST., ROCKVILLE
BRANCH STORE: BOSTON POST RD., OLD SAYBROOK

Springtime is BUSTER BROWN. time

Fresh, new fun styling—colors to match the springest outfits. All with famous Buster Brown quality. Bring your little girl in soon for a careful fitting by children's shoe experts.

GUSTAFSON'S SHOE STORE
705 MAIN STREET MANCHESTER

BEZZINI BROS. QUALITY combination sale!

Greatest Bedtime Story Ever Told! SPECIAL PURCHASE! — We include 2 innerspring mattresses, 2 box springs and 2 twin size beds in French Provincial, Early American or Contemporary

You Get Style...Beauty...the Best Comfort...ALL for Our Low Price!

CHARMING FRENCH PROVINCIAL! 6 PIECE BED ENSEMBLE

We include all this:
• 2 French Provincial, Antique White twin size beds, richly detailed with gold highlights.
• 2 Quality Innerspring Mattresses constructed for healthful, comfortable rest.
• 2 Matching box spring units.

EXCITING DANISH MODERN! 6 PIECE BED ENSEMBLE

We include all this:
• 2 Smart Contemporary styled Danish Modern twin size beds in rich walnut finish.
• 2 Quality Innerspring Mattresses built for comfort and restful sleep.
• 2 Matching box spring units.

6 PIECES Your Choice \$139

Authentic Colonial Maple! 6 PIECE BED ENSEMBLE

We include all this:
• 2 Maple twin size beds in Authentic Colonial style. Rich, hand rubbed Nutmeg Maple finish.
• 2 Quality Innerspring Mattresses designed to give you deep down comfort; restful sleep.
• 2 Matching foundation units.

Permanent Press Dress Slacks 4.48

Husky Sizes 8 to 18 . . . **4.78**

Popular Ivy style in a solid oxford weave blend of 45% Vibreil, 30% acetate, 25% nylon. 4 pockets. White, olive, gray, black or blue. 8 to 18 regular, 8 to 10 slim.

BEZZINI BROTHERS
519 MIDDLE TURNPIKE EAST MANCHESTER, CONN.

27

MAR

27

Manchester In Days Gone By

TEACHERS' HALL—The Harper's New Monthly magazine of November, 1922, in an article entitled "An Industrial Experiment at South Manchester," gives South Manchester the credit of being the "seat of the introduction of silk weaving in the United States."

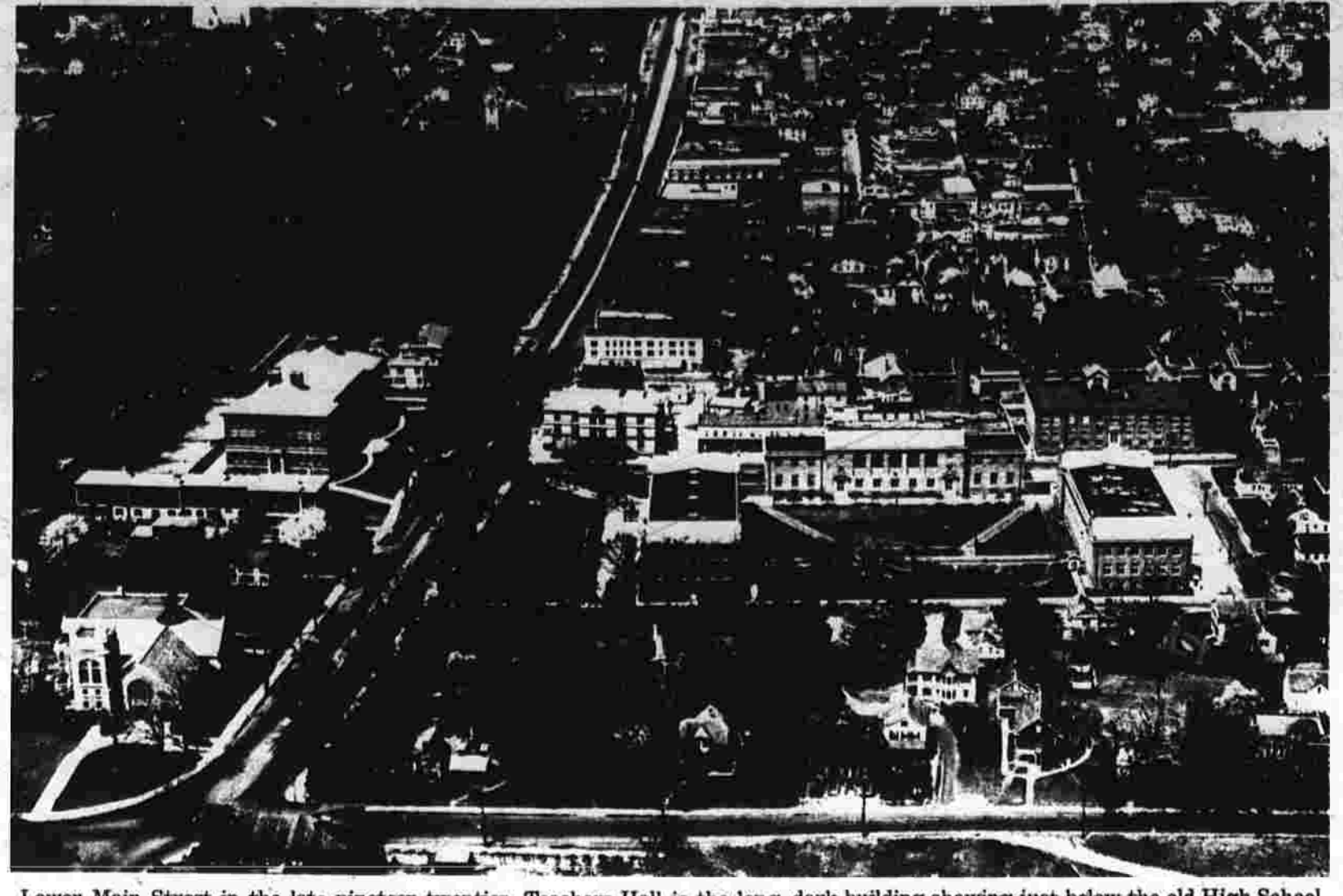
Cheney Bros. was the experimental center. The building was built for workers. Two boarding houses were provided, one for single men and one for married couples. An item in the feature, "Manchester Past and Present," in the Herald, June 14, 1967, tells us that in 1860 a building formerly used as a small hotel purchased from Lewis Taylor by Cheney Bros. was used as a men's boarding house. It is believed that the other house was called the Four-Acre House, and was on Cooper Street facing the lot that is now the ball field and Washington School playground.

Cheney Bros. built a small school which is now the Lata Junior Museum. By 1871 there had been such an increase in the school population that Cheney Bros. built a second school at Vine and School Sts. Within ten years this building had to be enlarged to accommodate 460 pupils.

By 1889 there were nine teachers in the Ninth School District, the area of South Manchester surrounding the mills. Another addition was authorized by the board of Cheney Bros. (This school, which was enlarged, is the one which burned in 1922.)

Special state legislation permitted the Ninth School District to incorporate as a separate and independent body politic. This newly incorporated board and the schools of the District became affiliated with the New Britain Normal School, through an arrangement with the Connecticut State Board of Education. The schools of South Manchester were known as the training schools for teachers.

The annual report of the Board of Education dated 1892 says, "Our relation to the State Normal School of New Britain is to continue." It noted that during the year past, 64 undergraduates from New Britain had been at work in the South Manchester Schools, in relay work in saws of rooms wearing white gloves to detect dust. A critical eye of the head teacher, part of the normal school force and under normal direction supervised the work of the practice teachers. The services of this train-



Lower Main Street in the late nineteen-twenties. Teachers Hall is the long, dark building showing just below the old High School.

ing personal cost the Ninth District nothing. Apparently able or willing to take boarders. Where, then, did the credit of being the "seat of the introduction of silk weaving in the United States" come from? The man's boarding house on the west side of Main St., opposite the Ninth District School, was apparently converted into a home for teachers and called the East Boarding House or Teachers' Hall. Those teachers whose homes were not in Manchester lived at Teachers' Boarding House.

Among the reports of expenditures contributed toward the needs of the Ninth School District in 1907-08 were approximately eight thousand dollars for expenses of East Boarding House. The firm spent anywhere from a thousand to fifty three hundred dollars per year for a sprinkling system to control fire, operating and maintenance expenses, new furniture and care of the grounds. They paid all taxes and made another addition. All these improvements added to the physical, mental and financial welfare of the teachers. As one entered the building through a heavy Dutch door, one might have had the feeling of entering the salon of a ship. Straight ahead was a broad carpeted staircase leading to the "Captain's Quarters" previously mentioned as Mrs. Goodwin's suite. At the left were the finances, the housekeeping, and the preparation of meals which were ample, nutritious, and well balanced. Each teacher was kept in the kitchen, keeping it clean, in order, and changing the linens were done by the young teachers and the training girls stood in awe of Mrs. Goodwin and wondered at the tales that she told of her life as a normal school teacher, part of the normal school force and under normal direction supervised the work of the practice teachers. The services of this train-

ing personal cost the Ninth District nothing. Apparently able or willing to take boarders. Where, then, did the credit of being the "seat of the introduction of silk weaving in the United States" come from? The man's boarding house on the west side of Main St., opposite the Ninth District School, was apparently converted into a home for teachers and called the East Boarding House or Teachers' Hall. Those teachers whose homes were not in Manchester lived at Teachers' Boarding House.

Among the reports of expenditures contributed toward the needs of the Ninth School District in 1907-08 were approximately eight thousand dollars for expenses of East Boarding House. The firm spent anywhere from a thousand to fifty three hundred dollars per year for a sprinkling system to control fire, operating and maintenance expenses, new furniture and care of the grounds. They paid all taxes and made another addition. All these improvements added to the physical, mental and financial welfare of the teachers. As one entered the building through a heavy Dutch door, one might have had the feeling of entering the salon of a ship. Straight ahead was a broad carpeted staircase leading to the "Captain's Quarters" previously mentioned as Mrs. Goodwin's suite. At the left were the finances, the housekeeping, and the preparation of meals which were ample, nutritious, and well balanced. Each teacher was kept in the kitchen, keeping it clean, in order, and changing the linens were done by the young teachers and the training girls stood in awe of Mrs. Goodwin and wondered at the tales that she told of her life as a normal school teacher, part of the normal school force and under normal direction supervised the work of the practice teachers. The services of this train-



Teachers Hall shortly before it was torn down.

FOR PRESCRIPTIONS

DRUG STORE

AT THE PARKADE

404 WEST MIDDLE TURNPIKE

Things You Use Every Day—Save 50%

"THOUSANDS OF ITEMS"

REXALL

Get 2 for the price of 1

ORIGINAL

STARTS TOMORROW

PLUS A PENNY!

Save with GLAD Food Storage Bags.

Want to store a rib roast, or some broccolis, salad greens, or whatever... or anything? Big, strong GLAD Food Storage Bags are the easy way to do it. Strong enough for any job in refrigerator or freezer. And they keep all kinds of other items, like sweaters, shoes, or silver, just the way you want them. Right now you can get 5¢ off on GLAD Food Storage Bags, and you'll find 10 extra bags free in every specially-marked box. So clip the coupon and start saving. Easy-open, clear plastic GLAD Food Storage Bags—clear plastic GLAD Food Storage Bags—the strong ones from Union Carbide.

5¢ STORE COUPON

5¢

5¢

5¢

5¢

Bolton Annual Budget Hearing April 15

The Board of Finance has set the annual budget hearing for April 15. The town meeting to adopt the 1968-69 budget will be May 4 or 7.

The finance board went over school budget requests with the Board of Education at its meeting last night in the Community Hall. Earlier in the evening it reviewed requests from other town departments. It will continue this review at a special meeting next Tuesday.

Dr. Joseph Castagna, superintendent of schools, told the finance board that the amount estimated for transportation can now be reduced by \$5,000 as a result of the awarding of the transportation contract Monday. An additional \$1,500 may be cut later if the insurance advisory board agrees.

But \$300 must be added under health services, to cover the cost of physical examinations for bus drivers, an item which the school board has agreed to pay.

The total budget requests from the Board of Education, including those adjustments, are \$4,438,438. This is \$108,877 more than what has been figured as the school board's actual operating budget for this fiscal year.

According to a summary in the budget book, this figure represents, without adjustments for the transportation account, about a 16 per cent increase over 1967-68.

Inflation Blamed

The summary explains that five to 10 per cent of this increase can be attributed to the 8-10 per cent increase in the cost of materials and supplies and the present inflationary economic conditions. The remaining increase is due mainly to increased salary demands which we must meet in order to remain competitive.

The summary lists some of the general areas of increase and concludes with an estimate of state and federal grants, offsetting the requests, of \$29,667. Copies of the Board of Education budget requests will be available for study by townsmen in the town office and in the public library.

Board of Finance Roy Peckham began the combined portion of last night's meeting by handing out four sheets of figures analyzing school board expenditures from 1961-62 on, and the impact of educational expenses on local property taxes.

He said he anticipates a rise of 7.5 mills due to the school budget alone, if it is approved as requested.

Largest Rise in Salaries

School board chairman Harold Smith said that the major increase this year is in salaries and related items, such as benefits. This includes all salaries, teachers, secretaries, custodians, administration, and comes to \$85,000 above the current fiscal year.

Other expenses account for an

Police Seek Suspect in Girl's Death

(Continued from Page One)

The victim's father, John P. Marshall, an investment counselor, flew to Massachusetts Tuesday to help police in their investigation.

He said his daughter was popular, dated fairly often, but did not have a steady boyfriend.

Outside the Fairbanks School in Sudbury, the U.S. flag flew at half mast in tribute to Miss Marshall, who taught a second grade class.

Many teachers and pupils wept Tuesday when they learned of the slaying. One of Miss Marshall's friends at the school took over her class.

The victim was graduated from Brewster College in Vermont and earned her master's degree from Emory University in Georgia.

Before coming to Sudbury, she spent a year in Puerto Rico as an Episcopal missionary. The attack was similar to an assault last May on Jane F. Balkin, a Harvard graduate who lived less than two blocks from Miss Marshall's home. She was stabbed several times while taking a shower, but survived.

Miss Mary Emery of Providence, R.I., who had been Miss Marshall's roommate until earlier this month, was unable to tell police whether anything had been taken from the apartment.

Mrs. Julia Morford of Andover, Mass. Marshall's half-sister, said the victim was expecting another roommate. Also a teacher, she said she had been in the apartment on the night of the slaying.

Mrs. Morford described her half-sister as "happy, happy in the work she was doing." She said she had talked with the girl about a week ago.

Thyroid Diseases Seminar Attracts 150 Area Doctors

A day-long symposium on clinical endocrinology at Hartford Hospital and consulting Manchester Memorial Hospital endocrinologist, at McCook Hospital, University of Connecticut School of Medicine.

About 150 physicians from all areas of Connecticut, Massachusetts and Rhode Island were welcomed at 9:30 of thyroid problems and the session was devoted to treatment and management of these problems. The most recent developments in medical and surgical therapy were emphasized.

The physician audience took part in the discussion of each thyroid gland patient, guided by the panelists. Subjects were the thyrocardiac, pregnancy, the "weary housewife" syndrome, and surgery.

Luncheon was served at noon in the hospital cafeteria for all physicians. The meeting was adjourned at 4:30 p.m.

Dr. David B. Bringham, well known physician in various fields as part of a continuing education program of the hospital staff kept abreast of the most recent developments.

Dr. Martin Duke, hospital director of medical education, is in charge of arrangements.

Small clay tablets uncovered at Nuz, Iraq, indicate that the hospital staff keeps abreast of the most recent developments.

Dr. Martin Duke, hospital director of medical education, is in charge of arrangements.

Ahearn Supports School Board's Building Plans

Alypius Ahearn, who is seeking the Democratic nomination as representative from the 5th District at the state legislature, has issued a statement urging all citizens of Bolton to support the Board of Education's school building program at the polls in the referendum Friday.

Citing the cost of delay in terms of stop-gap measures and spinning costs, Ahearn said, "Bolton is now at the crossroads. A decision must be made now as to whether Bolton will move forward or backward."

"Education costs money," the candidate said, "but can we in Bolton afford not to give our children as good an education as the children of Andover or Coventry or Manchester? Our children are our most valuable resource, our most precious possession. In a world that is becoming more competitive, more difficult to succeed in, the person without an education is a handicapped person who is physically or mentally handicapped."

"Just as society is obliged to protect and provide for our elderly," he continued, "so society is even more obligated to protect and provide for our young children."

He concluded with a plea that voters support the Board of Education, the Board of Finance, and the Public Building Commission "all of whom have service to clean the schools at worked for almost two years to develop an educationally sound building program consistent with the town's ability to pay."

Racial Salad SINGAPORE

The new name of Singapore is such a racial mixture that in a recent statement clinical professor of surgery at Harvard Medical School and senior associate in surgery at Peter Bent Brigham Hospital, Dr. Bruce Brown,

DELICIOUS LEAN RIB PORK ROAST 59¢

LOIN END PORK ROAST 59¢

CENTER CUT PORK CHOPS 79¢

5-RIB CUT

COUNTRY STYLE PORK RIBS 49¢

Lean Fresh Ground Beef 3 1/2 \$1.59

DOVALETTE FACIAL TISSUE 5 200 Ct. \$1

ALL PURPOSE—7¢ OFF LABEL 5 200 Ct. \$1

CRISCO OIL 38 Oz. \$1.59

SWEET LIFE TUNA 3 7 Oz. \$1

SANTA ANNA SOLID PACK TOMATOES 3 8 Oz. \$1.59

DAIRY DEPT.

SWEET LIFE MARGARINE 5 1 Lb. \$1

Pillsbury Buttermilk BISCUITS 3 8 Oz. \$1.59

ONCE IN A LIFETIME OFFER!

ARTISTIC GURRIER & IVES PATTERN

THIS WEEK'S FEATURE 9¢ each

12 Oz. Beverage Glass

8 BAND AIDS 79 Count. Reg. 79¢. NOW 2 For \$1

HALO BLUE SHAMPOO 7 Oz. Reg. \$1.09. NOW 79¢

REPEAT OFFER

CHOCK FULL-O-NUTS COFFEE lb. can 59¢

WITH \$10 PURCHASE OR MORE ON COUPON PER CUSTOMER OFFER GOOD TILL MARCH 30th

OPEN SUNDAYS 8 a.m. TO 1 p.m.

MANCHESTER PUBLIC MARKET

805 MAIN STREET, MANCHESTER

OPEN THURSDAY AND FRIDAY NIGHTS till 9 p.m.

STYLARAMA PURCHASES OVER ONE QUARTER MILLION SQ. FT. OF PAINTING

LOWEST PRICES EVER OFFERED ON FINISHED BASEMENT

Special FREE BUILT-IN BAR during this sale

OPEN HOUSE DAILY 9 to 9 — FREE GIFTS

KITCHENS

Select from beautiful and ornate wood cabinets and counters. All latest styles custom designed to fit your needs, requirements and budget.

AS LOW AS \$280 PER WK.

SEE OUR FULL SIZE ROOM DISPLAYS—GET LOADS OF IDEAS

525-5341

FREE ESTIMATES • YEARS TO PAY

FIRST PAYMENT JUNE '68

ONE CONTRACT DOES IT ALL

CARPENTRY • ELECTRICAL • PLUMBING

ALL WORK BY STYLARAMA CONTRACTORS

OPEN SUNDAY 12 to 6

7453 BERLIN TURNPIKE, NEWINGTON, CONNECTICUT

U.S. Deserter Calls for Defections

Los Angeles Times — Washington Post News Service MOSCOW — A U.S. Air Force deserter issued an appeal over Soviet television Saturday night calling for widespread American military defection in protest against the Vietnam War.

The young Negro identified himself as Staff Sgt. J. Wright. He appeared for about five minutes and seemed to be reading a statement on what was later described as a recorded program.

He said open American aggression in Vietnam was responsible for his departure from the United States.

Wright urged "all fellow Americans to make the same choice that I did."

It was not known how the deserter reached the Soviet Union, or when he arrived. The official Soviet press agency Tass later reported that Wright was in Moscow "several days ago."

This may indicate that he either has left or is preparing to leave for some neutral country, presumably Sweden where a number of other U.S. military personnel have received political asylum.

"I have long thought about why Americans must interfere in a war which is in fact a civil war," Wright told his TV audience. "I came to the conclusion that the United States is committing outright aggression in Vietnam."

Wright said he served in South Vietnam at the American base at An Khe from August, 1966, to August, 1967. He indicated his decision to desert followed his return from Vietnam to the U.S. Air Force Base at Burkdale, La.

He also mentioned tours of duty in South Korea and Japan. This was the second incident involving American military deserters in Moscow since late last year. Four Naval enlisted men left here Dec. 19 for Sweden. They spent five weeks in the Soviet Union and made a number of anti-U.S. statements in the Russian press.

A U.S. embassy spokesman said the American mission knew nothing about the latest defection. He said the embassy would request permission to talk with the man if he is still in Moscow.

When the four appeared in Moscow last year, the embassy failed on at least two separate occasions to contact the deserters.

In this latest case it was extremely difficult to pick up the American's full statement. A simultaneous Russian translation over the English produced problems with both languages.

The deserter said he was "The American government is committing a crime in Vietnam. Our duty is to resist this struggle against this crime."

The press agency also said the deserter "called upon Americans fighting in Vietnam to think once again for the sake of what they were fighting and dying in that country."

Wright delivered his denunciation of American policy in a cold voice. He was dressed in a plain sweater, white shirt and tie.

Deaths in The Nation

Alex L. Hillman (AP) — Alex L. Hillman, 67, financier and publisher, died Monday night. Hillman was former president of Hillman Periodicals, publishers of Pageant and other mass-circulation magazines. He was president of Alex Hillman Corp., an investment firm.

Margaret Margoloth (AP) — Dr. Margaret Margoloth, 56, professor of Hebrew and Greek literature at the Jewish Theological Seminary of America, died of cancer Sunday in Jerusalem. The seminary announced Tuesday.

Carter A. Childs (AP) — Carter A. Childs, 56, longtime chairman of the board of Childs Grocery Co., which operates a chain of more than 50 stores in Texas, Louisiana and Arkansas, died Tuesday. Childs sold the company to the Kroger Grocery Co. in the mid 1950s.

Let the Profile Bread Plan help prolong your Slender Years.

First National Stores

GRAPE JELLY
Richmond
2 LB JAR **39^C**

MAXIM FREEZE DRIED COFFEE
4-oz JAR **83^C**

GREEN GIANT VEGETABLES
IN BUTTER SAUCE
Sweet Peas
Sweet Corn
Green Beans
Mixed Vegetables
10 oz pkgs **4¹⁰⁰**

OCEAN SPRAY CRANBERRY JUICE COCKTAIL
48 oz Btl **49^C**

COFFEE RICHMOND
Regular or Drip 1 lb can **59^C**

SPRING FEVER

FINEST FOODS...BIG SAVINGS...S&H GREEN STAMPS, TOO!

LAMB LEGS
Regular - Whole **63^C**
LB
OVEN READY LB **69^C**
LOIN LAMB CHOPS LB **138**

Finest Cold Cuts!
Bologna • Salami 6 oz pkgs **89^C**
Spiced Luncheon 6 oz pkgs **89^C**

Imported Bacon Sale!
Maple Leaf Regular 8 oz pkgs **53^C**
Maple Leaf Canadian 4 oz pkgs **49^C**

Everyday Low Prices!

Finast Flour	5 lb can	49 ^C
Finast Coffee	1 lb can	79 ^C
Yuban Coffee	Regular, 5 lb can	79 ^C
Lipton Tea Bags	pkgs of 50	59 ^C
Welchs Grape Jelly	22 oz jar	39 ^C
Peanut Butter	3 lb can	99 ^C
Hunts Tomato Catsup	2 1/2 qt jar	49 ^C
Finast Tomato Ketchup	2 1/2 qt jar	45 ^C
Swanson Boned Turkey	12 lb can	37 ^C
King Oscar Sardines	2 1/2 qt can	63 ^C

Anchor Hocking Treasure Chest

COFFEE MUGS OR SOUP CEREAL BOWLS

YOUR CHOICE EA. 19^C

LOOK WHAT 29^C WILL BUY

• 9-3/8" Gondeola Dish
• 6" Three Toed Dish
• 8 1/2" Vegetable Boat
• 8 oz Measuring Cup
• 6" Mixing Bowl
• 9 oz Georgian Tumblers
• 5 1/2" Ash Trays

YOUR CHOICE EA. 29^C

COME JOIN OUR SPRING FESTIVAL OF TOTAL VALUE, WITH HIGH QUALITY AND

Beer, cigarettes and tobacco exempt from stamp offer. Prices effective First National Super Markets. We reserve the right to limit quantities.

FESTIVAL of TOTAL VALUE!

ITALIAN SAUSAGE HOT or SWEET **75^C** LB
PURE PORK

FRESH PORK BUTTS BONELESS 59% **49^C** LB
SAUERKRAUT 1 lb 17^C 3 lb 29^C

BONELESS STEAKS
USDA CHOICE
California Roast Chuck 59%
Ground Chuck Tasty 69%
Ground Round Extra Lean 89%
Beef Stew Lean Cubes 79%

USDA CHOICE
Fillet Steak Chuck 79%
Pepper Steak Chuck 79%
Cube Steak Chuck 99%
London Broil Shoulder 99%

CHICKEN BREASTS US Grade A Fresh 59%
From the Oceans of the World!
FRESH HADDOCK 69%
Fresh Standard Oysters 8 oz pkgs 85^C
Shrimp Rolls Heat & Serve 6 oz 89^C
Fish Cakes Heat & Serve 4 oz 45^C
Fish Sticks Heat & Serve 5 oz 55^C
Smelts Canadian No. 1 3 oz 39^C

ECONOMY CORNER!
Oxtails 12 29^C | Tripe 12 29^C
Beef Kidneys 1 lb 39^C
Beef Liver 1 lb 39^C

Lenten Frozen Favorites!

MRS. PAULS FISH FILLETS 8 oz pkg **39^C**

HOWARD JOHNSON SHRIMP CROQUETTES 1/2 oz pkg **59^C**

TASTE O' SEA Seafarer 8 oz pkg **55^C**

Lenten Dairy Suggestions!

Cream Cheese Brookside 8 oz pkgs **29^C**

Cooper Sharp Sliced White, Colored 8 oz pkgs **45^C**

Cheese American Brookside Slices 8 oz pkgs **43^C**

Swiss Cheese Brookside 8 oz pkgs **43^C**

First O' The Fresh Fruits & Vegetables!

GRAPEFRUIT INDIAN RIVER

Anjou PEARS 25^C LB

EXTRA LARGE SIZE **4 FOR 39^C**

Loaded With Vitamin A **2 29^C**

SAVE 10^C WITH THIS COUPON

Toward purchase of two 22 oz pkgs

PILLSBURY BROWNIE MIX

Valid thru Sat., March 30, 1968. Limit one coupon per adult.

ALKA-SELTZER TABLETS Btl 25 **47^C**

BAN ROLL-ON DEODORANT 1 1/2 oz **64^C**

SCHICK STAINLESS STEEL INJECTOR BLADES 1/2 oz **99^C**

VOTE TOOTH PASTE 2 1/2 oz **44^C**

LOW PRICES THROUGHOUT THE STORE - PLUS VALUABLE S&H GREEN STAMPS!

We reserve the right to limit quantities. Prices effective First National Super Markets thru Saturday, March 30, 1968.

First National Stores

AJAX LAUNDRY DETERGENT
49 oz pkg **59^C**

TROPICANA DIET SODA 6-PACK 10 oz btl **39^C**

DIET CHIFFON Margarine 2 lb pkgs **79^C**

GOLDEN COOKIES
OATMEAL, CHOC. CHIP BROWNIE COCONUT BARS
8 oz pkgs **4¹⁰⁰**

TOMATOES RICHMOND PEELLED
28 oz cans **3 95^C**

PETER PAN PEANUT BUTTER
12 oz jar **33^C**

Beer, cigarettes and tobacco exempt from stamp offer.

Sex—Red China Style

By RICHARD HUGHES
The London Sunday Times
HONG KONG — President Liu Shao Chi of China, chairman Mao Tse-Tung's beset but durable opponent, is now accused of having pondered to his son Liu Yun Jo in an improper love affair with a Russian girl. Father Liu, party writers complain angrily in an official document, ordered that an intensive search be made among Chinese actresses and attractive young widows for an alternative mate for his lecherous son.

Liu junior, it is said, fell in love with a Russian girl when he was studying in Moscow seven years ago, kept in touch with her through the Soviet Embassy in Peking and sought vainly to return to Russia to marry her.

This is the first time sex has reared its ugly capitalist head in the "cultural" revolution although the Maoist puritans are laying a two-way bet by insisting that Liu junior did not really love the Russian girl — even in a decadent romantic manner — but was actually using her as an excuse to live in Moscow instead of China.

Anyway, it is said, papa Liu did his best to distract his errand son with a party lassie of Chinese pulchritude — in photos and in the flesh. The young man dallied first with a young actress — to the alarm and dependency of her studio colleagues who remained true to chairman Mao's thoughts — and then with a trusting if naive factory worker. But the pure Maoist woman doctor, because she wore glasses, "Better find me a pretty young widow or two," he reportedly observed "in a regular mood."

With Brazil Shaw leniently, Moscow temptress improbably retained her influence over him at long distance, inflaming him with surreptitious gifts of Russian candy which concealed lascivious political messages.

However, in the end, it appears that chairman Mao's virtue triumphed over illicit love, miscegenation and paternal degeneracy. The Moscow dalliance has at long last been ended and the implication is that Liu junior is now working perfectly in some commune surrounded only by chairman Mao's thoughts and women wearing glasses.

"What a rotten fellow with an utterly vicious son was Liu Shao Chi," the party document declares.

(Distributed by Washington Post News Service)

IT TAKES ALL KINDS ALBUQUERQUE (AP) — When the New Mexico Shriners closed their club headquarters in Albuquerque they held a farewell party.

Three bands played — one for marching, one for dancing and one for listening.

NOTICE PUBLIC HEARING

ADDITIONAL APPOINTMENTS BOARD OF DIRECTORS TOWN OF MANCHESTER, CONNECTICUT

Notice is hereby given that the Board of Directors, Town of Manchester, Connecticut, will hold a Public Hearing in the Hearing Room at the Municipal Building, 11 Center Street, Manchester, Connecticut, Tuesday, April 2, 1968, at 8:00 p.m. on proposed additional appointments as follows:

To: General Fund Budget 1967/68, Police Department's Account, A-20, Special Services and OverTime \$6,000 to be financed by increase in current services revenue.

To: General Fund Budget 1967/68, Registrar of Voters 1,500 to provide for April 30, 1968 referendum expenses to be financed by appropriation for unappropriated surplus.

To: General Fund Budget 1967/68, Board of Education, Account No. 494, Adult Basic Education to be financed by additional grant to be received from State Department of Education.

William R. Schaller, Acting Secretary Board of Directors Manchester, Conn.

Dated at Manchester, Connecticut, this 20th day of March 1968.

NOTICE TOWN OF COVENTRY ZONING BOARD OF APPEALS

There will be a Public Hearing Monday, April 1st in the Town Building at 7:00 P.M. to hear the following appeal:

Ruth W. Smith, Babcock Hill Rd., appealing from a decision of the Building Inspector and Zoning Agent dated March 21st. Applicant wishes to remodel present store into an apartment in a house on Main Street next to the Congregational Church, in a business zone.

All interested persons are invited to attend.

Grant E. Toothaker, Jr., Chairman Zoning Board of Appeals

27

MAR

27

Prisoners Tutored By Brown Students

PROVIDENCE, R.I. — Every week some 15 Brown University students are locked behind bars with convicted murderers and other felons in the Rhode Island State Prison, known as the Adult Correctional Institution. The students have committed no crimes and they suffer no stigma. They go to prison voluntarily for two hours every Wednesday evening for a cause that's hailed by the inmates and prison and university officials.

A guard leads the students through two sets of gates, past what is known as the maximum custody cell block and into the recreational, educational building of the prison.

There, in classrooms and in the library behind heavy bars, each student sits with a prisoner or tutor him on a man-to-man basis.

Subjects range all the way from simple reading and writing to college level biology, chemistry, abnormal psychology, foreign languages and calculus.

The classes begin sharply at 6:30 p.m. Each student handles two inmates for 60 minutes each until 8:30 p.m. when the students again are ushered out into the free world.

The student-tutors are members of the Brown Youth Guidance Program, a social work organization on the Brown campus in which more than 400 of the student body of 5,000 participate.

The participants include students at the men's college of the Brown and women from Pembroke College, the women's college at Brown. On to accommodate prisoners on a tutorial program at the men's prison.

Members of the Brown Youth Guidance program spend a total of some 800 hours a week doing social work with disadvantaged adults and children, particularly those in deep trouble in Providence.

They cooperate with 16 social agencies. Their programs in-

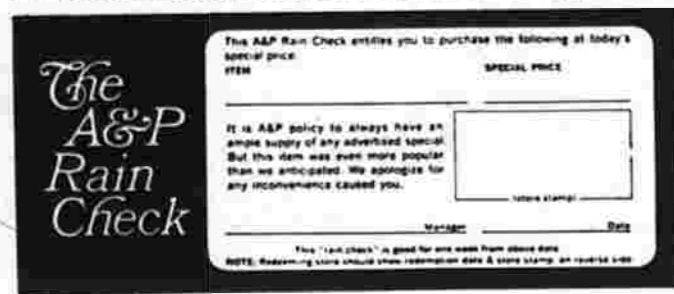
we care



we never "run out" on a sale!

We never advertise a special sale item unless we have an ample supply. Once in a great while, the special is more popular than we imagined. So occasionally, we do run out of the item.

But we never "run out" on a sale. If the item is sold out, just ask the manager for a "RAIN CHECK".



An A&P Rain Check is a certificate that entitles you to buy the item at the same special price, the following week.

We think that's the fair thing to do. We think that shows "WE CARE".

Not every store can care that much. A&P can... and does. Shouldn't A&P be your store?

COPYRIGHT © 1967, THE GREAT ATLANTIC & PACIFIC TEA CO., INC.

Cherry Pie 59¢
Enriched Bread 29¢
Homestyle Donuts 33¢

Cream Cheese 25¢
A&P Grated Cheese 69¢
Sharp Cheddar 89¢

"Super-Right" Meats — Great Buys!

YOUNG TURKEYS U.S. Gov't Inspected Grade A
39¢ lb.
 SIZES BETWEEN 4 and 8 LBS.

TOP SIRLOIN, RUMP, TOP or BOTTOM ROUND or CROSS RIB BONELESS BEEF ROAST 99¢ lb.

"Super-Right" Quality CHUCK FILLET STEAK BONELESS BEEF 89¢ lb.
RIB STEAKS—Cut From 1st 4 Ribs or SHOULDER STEAK Boneless Cut From Chuck 99¢ lb.

Turkey Legs 29¢
Fresh Picnics 49¢
Sausage Meat 69¢
Delmonico Steaks 1.89 lb.

"Super-Right" Quality Ground Meat Sale
59¢ lb., 69¢ lb., 99¢ lb.
Meat Loaf Mix 79¢

A&P Vegetables 2 for 49¢
Fresh Carrots 2 for 29¢

A&P Orange Juice 5 for 89¢
French Fries 2 for 49¢
Meat Pies 5 for 89¢

Eight O'Clock Coffee 3 lb. 1.49
Spaghetti Sauce 73¢
Coffee 1.39

Star-Kist Tuna Fish 3 6 1/2 oz. 89¢
Italian Tomatoes 3 2 lb. 1.00
Cling Peaches 2 lb. 29¢

Pineapple Juice 3 qt. 1.41 98¢
Hi C Fruit Drinks 4 qt. 1.41 98¢
SpaghettiOs 2 1/2 lb. 33¢

VALUABLE COUPON
 With this Coupon & Purchase of \$5.00 or More
GRANULATED SUGAR 5 lb. 49¢

Margarine 2 1/2 lb. 63¢
Fruit Cocktail 3 1/2 lb. 95¢
Flour Pillsbury 5 lb. 65¢
Cling Peaches 3 1/2 lb. 1.00

VALUABLE COUPON
 With this Coupon & Purchase of \$5.00 or More
ANN PAGE SOUPS YOUR CHOICE 3 10 1/2 oz. 25¢

Banquet—Cook in Bag Frozen Calgon 4 99¢

Calgonite Calgon Bath Oil Beads 1 lb. 45¢

Anacin Tablets 100 in. 1.19

Sweete Liquid Sweetener 2 oz. 69¢

Breeze with Borax Laundry Detergent 15 oz. 37¢

Oxydol Laundry Detergent 1 lb. 4 oz. 37¢

Kotex Feminine Napkins 24 in 83¢

Fems Feminine Napkins 12 in 45¢

Modess Vee Forms 12 in 45¢

Confidets Feminine Napkins 36 in 1.29

Modess SUPER 12 in 45¢

Top Job Liquid 15 oz. 39¢

Mr. Clean Liquid Cleaner 15 oz. 39¢

Leonard's SHOES 801 MAIN ST. MANCHESTER

It's fun to save Plaid Stamps
 ... 85% of all U.S. households save stamps for fine gifts. It's smart... it's thrifty to shop only where you receive Plaid Stamps.

Grand Way Kitchen Cutlery
Hand Crafted-Stainless Steel
 CARVING KNIFE 99¢
 PARING KNIFE 44¢
 UTILITY KNIFE 77¢

Dollar SALE
LIQUID DETERGENT 3 qt. 1.00
PLACE MATS 3 for 1.00
TOMATO JUICE 3 for 1.00
LADY SCOTT FACIAL TISSUE 4 pkts. 1.00
TISSUE 4 for 1.00
DINNER NAPKINS 4 for 1.00
TOMATO WEDGES 4 for 1.00
DEL MONTE SWEET PEAS 5 1-lb. 1.00

GENUINE DOMESTIC LEGS of LAMB 63¢ lb.
LAMB COMBINATION 45¢ lb.
SLICED BACON 59¢ lb.
FRESH HAMS 55¢ lb.
GROUND CHUCK 69¢ lb.
BOLOGNA OR LIVERWURST 49¢ lb.
CHUCK FILLET 89¢
SHOULDER STEAK 99¢
SHORT RIBS 59¢
FREE One pound of Grand Union All Meat or All Beef Franks

GENUINE DOMESTIC Lamb Chops
SHLD. CHOPS 89¢
RIB CHOPS 1.19
LOIN CHOPS 1.39
WILL THICKEN BEEF OXTAILS 39¢
LINK SAUSAGE 69¢
SAUSAGE 69¢
CUT UP FOWL 33¢ lb.
Delicatessen Features
BOILED HAM 1.29
ALL BEEF FRANKS 59¢
LUNCHEON MEAT 69¢
MUENSTER CHEESE 69¢

FRANCO-AMERICAN MACARONI-O's 5 1/2 oz. 1.00
CORN WHOLE KERNEL 5 1/2 oz. 1.00
FRANCO-AMERICAN CORN CREAM STYLE 5 1/2 oz. 1.00
GREEN GIANT GREEN BEANS 6 8-oz. 1.00
FRUIT COCKTAIL 6 8-oz. 1.00
APRICOTS UNPEELED 6 8-oz. 1.00
PEACHES 6 8-oz. 1.00
TANNY-MEAT & FISH CAT FOOD 8 1/2 oz. 1.00

STARKIST TUNA 3 6 1/2 oz. 79¢
GRAND UNION CHINESE LIGHT TUNA 4 6-oz. 1.00
NOODLES 2 8-oz. 57¢
GLEEM TOOTH PASTE 2 6-oz. 99¢
DOUBLE EDGE SCHICK BLADES 99¢
SHAMPOO 89¢
PRELL DEAL 89¢
SCOPE 69¢

GRAND UNION CRINKLE CUT FRENCH FRIES 9 9-oz. 1.00
SPINACH 9 10-oz. 1.00
FRIED RICE 49¢
Waffles 9 9-oz. 1.00
HAWAIIAN PUNCH 6 6-oz. 1.00
SCALOP DINNER 6 6-oz. 1.00
COBBLETS 6 6-oz. 1.00
BROCCOLI SPEARS 5 10-oz. 1.00
AWAKE 3 3-oz. 89¢
BAKED BEANS 3 11-oz. 1.00
WHITE BREAD 4 1.00

REDDI WHIP 59¢
SWISS SLICES 43¢
AMERICAN SLICES 58¢
MARGARINE 2 1/2 lb. 79¢
MUENSTER SLICES 42¢
LAND O LAKES BUTTER 77¢

MUSHROOMS 49¢ lb.
ORANGES 10 88 1/2 oz. 79¢
ASPARAGUS 39¢ lb.

Spring Garden Needs
PEAT BASE FERTILIZER \$3.95
GRASS SEED 5 lb. 98¢
PEAT HUMUS 2 50 lb. \$1.98

VALUABLE COUPONS
FREE 50 STAMPS
FREE 100 STAMPS
FREE 50 STAMPS
FREE 100 STAMPS
FREE 50 STAMPS
FREE 100 STAMPS
FREE 50 STAMPS
FREE 100 STAMPS
FREE 50 STAMPS
FREE 100 STAMPS
FREE 50 STAMPS
FREE 100 STAMPS
FREE 50 STAMPS
FREE 100 STAMPS
FREE 50 STAMPS
FREE 100 STAMPS

27

MAR

27

TRADE SMART---

This coupon for 100 Bonus Top Value Stamps
AT ALL POPULAR MARKETS

SMART TRADE COUPON

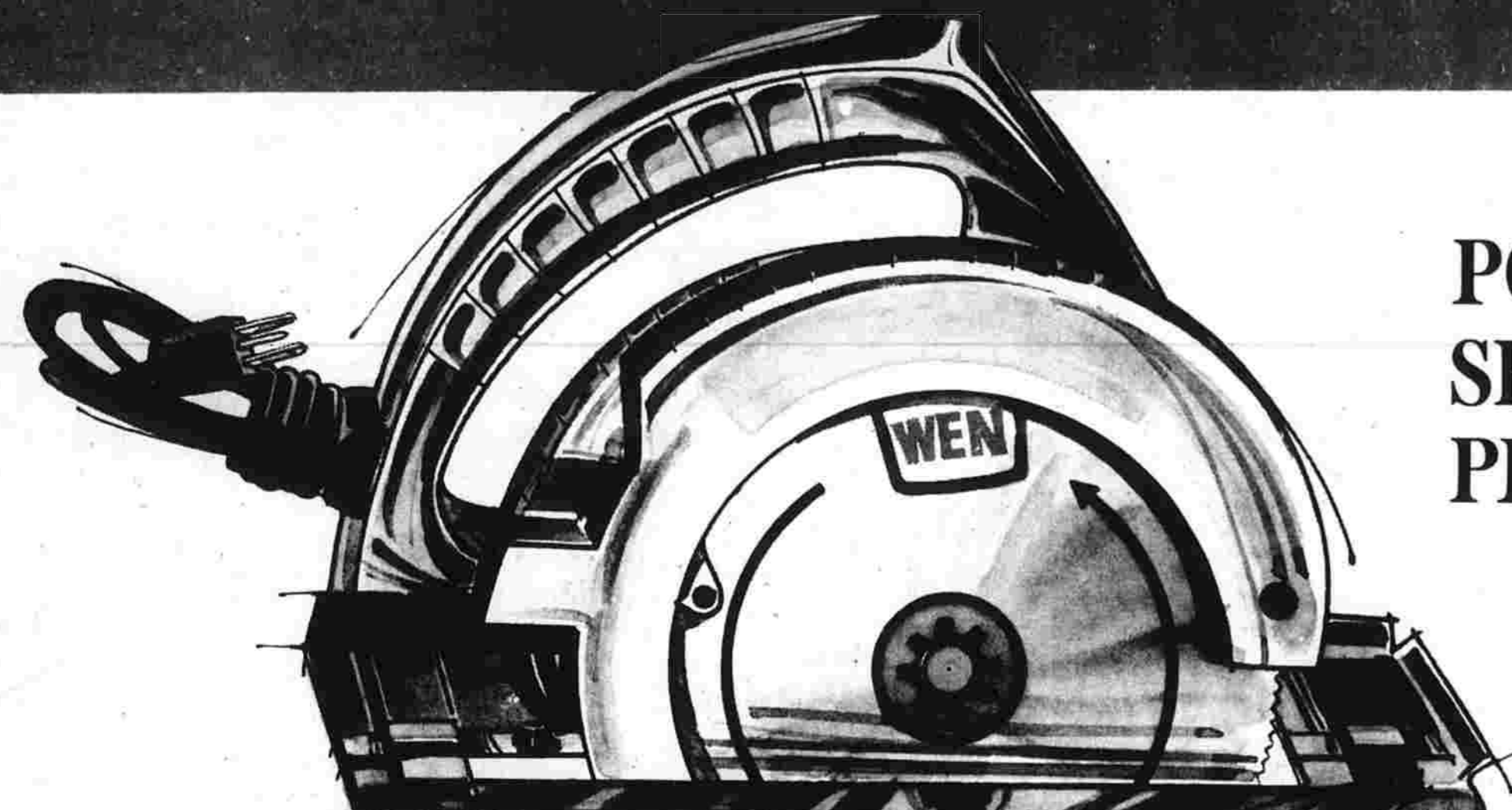
100 BONUS TOP VALUE STAMPS

At all Popular Markets with purchase of \$5 or more. No stamps with cigarettes or beer - State Law. One per family. Coupon void after Sat. Mar. 30, 1968

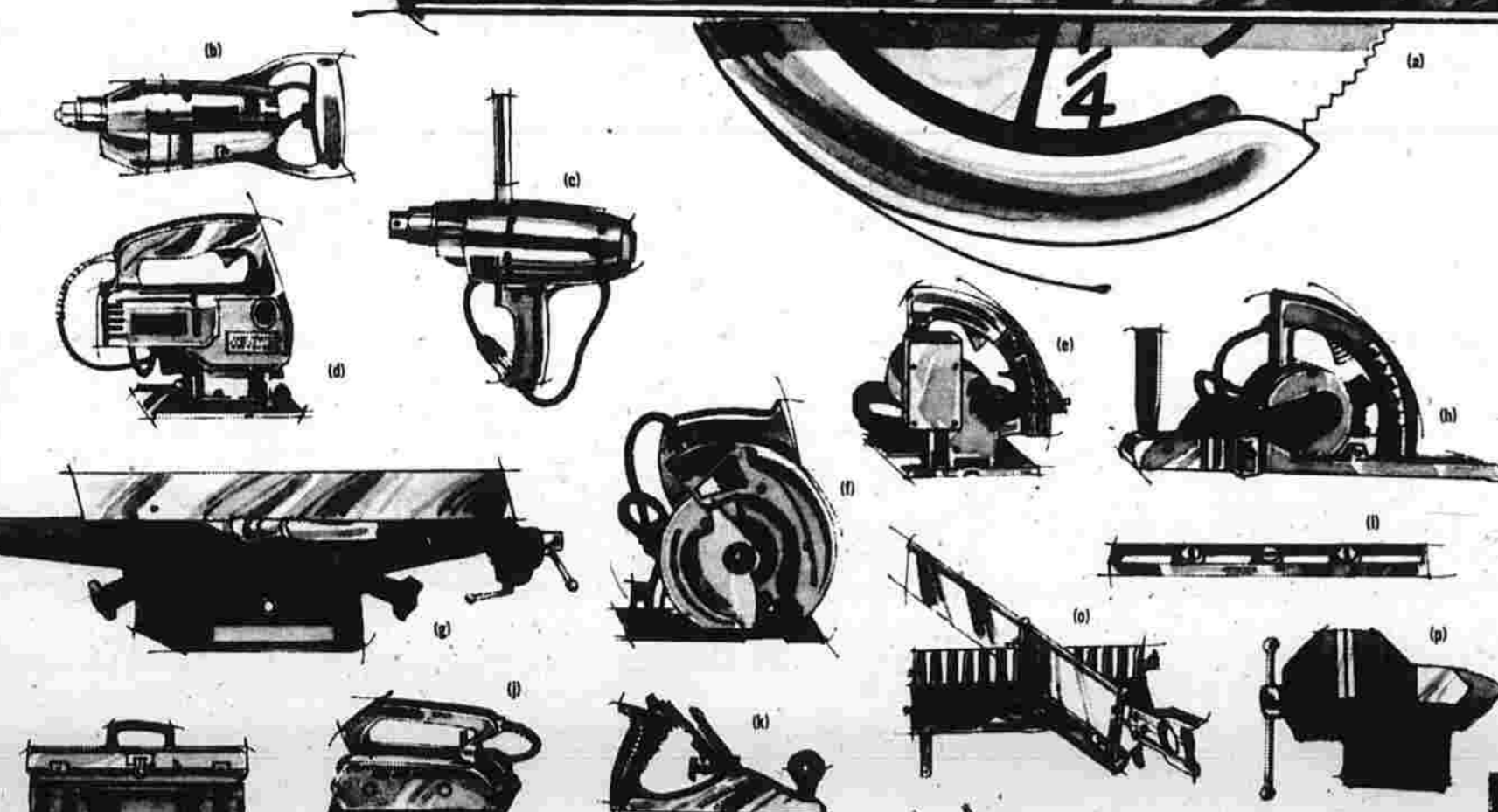


SMART TRADE!

YOUR TOP VALUE STAMPS FOR ...



POP'S SHOP PLEASURE



- WEN STALLION POWER SAW. 7 1/2" blade, finest alloy steel chrome plated combination blade complete with rip guard. 1 3/4" HP. 10 amp motor. 10 1/2 BOOKS
WEN 4-SPEED 3/4" POWER DRILL. Geared 1/4" chuck. 850 to 3100 no load rpm. 8 BOOKS
WEN 4-SPEED 1/2" ALL DRILL. 1/2 HP. 8 amp motor. Four super-torque electronic and gear reduction speeds. 12 BOOKS
DUEL VARIABLE 6-SPEED SABRE SAW. 1500 to 4800 strokes per minute. 1/2 HP motor. 10 1/2 BOOKS
WEN ALL SAW for every kind of cutting job, plastic, metal or wood. 1/2 HP motor, includes 7 blades. 12 BOOKS
SKIL POWER SAW. 6 1/2" blade. Has over 1 HP motor, sawdust ejection system. 8 1/2 BOOKS
DELTA "HOMECRAFT" 4" JOINER. Cuts rabbets 1/4" deep and 4" wide. Fence tilts 45° right and left for bevel cuts. Lens motor. 15 1/2 BOOKS
WEN ELECTRIC HAND PLANE. 1/2 HP motor. Guide plate removable for surface planing. Full 16" shoe. 12 BOOKS
MASTER HEAVY-DUTY TOOL BOX. Lift out tray. 7" x 7" x 16". 1 1/2 BOOKS
WEN SANDER POLISHER. Straight line action. 26 sq. in. sanding area with slide switch. 4 BOOKS
BUCK 5" SMOOTHING PLANE. Razor-sharp alloy steel cutter. Knob and handle of molded plastic. Bottom and sides machined. 1 1/2 BOOKS
"ALL TENNESSEAN" LEVEL by Mayco. Die-cast aluminum with 4 Pyrex plumb vials. Length 24". 1 1/2 BOOKS
CHANNELLOCK PLIER SET. 6 1/2" and 9 1/2" sizes with 5-position heads, parallel jaw grip. 1 1/2 BOOKS
BUCK BROTHERS HAMMER. 16 oz. forged steel; highly polished head. Leather disc, easy-grip handle. 1 1/2 BOOKS
MILLERS FALLS MITER BOX AND SAW. 28" x 5" saw, professional quality "Oiling" bearing saw guide. One-piece cast iron bed and back. Steel swinging insert travels left or right 45° to 90°. 2 1/2 BOOKS
WILTON HEAVY-DUTY VISE. 3 1/2" jaws open to 4". Replaceable pipe jaws at top. 3 1/2 BOOKS
BUCK 3/4" SAW SET. 15" hand saw, 12" mitre back, 15" pruning, 12" compass and 10" keyhole. Handle interchangeable. 1 BOOK
LUPKIN MEASURING TAPES. 134' of measurement for every need. 100' measure and a 12' L-shaped pocket tape. Black graduations on white blades, both tapes for. 2 1/2 BOOKS



...and there are more than 3,000 other gifts in the Top Value catalog.



TRADE SMART!

UNBEATABLE PRICES! UNBEATABLE SERVICE!

MANCHESTER 725 MIDDLE TURNPIKE, EAST
MANCHESTER BURR CORNERS SHOPPING PLAZA TOLLAND TURNPIKE-NEXT TO CALDOR
SOUTH WINDSOR SULLIVAN AVENUE SHOPPING CENTER

Waybest Tasty Plump Chicken Legs



These are genuine parts not quarters or sections
49¢ lb.
Waybest Chicken Breasts 59¢ lb.



- Daisy Butts 79¢ lb.
Swift Premium Bacon 79¢ lb.
Swift Premium Frankfurts 59¢ lb.
Pastromi By The Piece 89¢ lb. Sliced 99¢ lb.
Breaded Veal Steaks 69¢ lb.
Good Luck Margarine 29¢ lb.
Kraft Cracker Barrel Sharp Sticks 59¢ 10 ounce

- Armour Star Boneless Pork Shoulder 79¢ lb.
Shrimp Cocktail 3 for 99¢
Horse Radish 6 oz. 33¢

Ehler's Grade "A" COFFEE 2 \$1.19

Cornd Beef 49¢ lb.
Tasty Head Cut
Whole Brisket 69¢ lb. First Cuts 89¢ lb.

Chuck Roast 45¢ lb.
Top Quality Corn Fed Beef
At a real economical price!

Geisha White Meat TUNA 3 89¢
Solid pack in brine

COLD CUTS
Colonial Freshly Sliced

69¢ lb.
Mincd Bologna - Pickle and Pimento Veal Loaf - Garlic - Bologna

Vicks Formula "44" Cough Syrup 69¢
Save 40¢ on 3 1/4 oz. bottle

Lanolin Plus Shampoo 69¢
Save 31¢ on 16 oz. Bottle Regular or Egg

Waldorf Bathroom TISSUE 3 \$1
Four roll pkgs.

Bayer Aspirin
Hawaiian Punch
Vermont Maid Syrup
Stuffed Olives

69¢
Red-Orange-Grape Juice 3 46 oz. cans
Or Lo-Cal
Spanish Manzanilla 47¢ 7 oz. refrigerator bottle

Lea & Perrin Worcestershire Sauce 5 oz. 35¢
Sunshine Cookies Four varieties 4 4¢ \$1

B & M Baked Beans 55 oz. can 59¢
Dishwash Detergent 16 oz. 3 22 \$1
Diet Delight 4 16 oz. 99¢
Diet Delight Fruit Cocktail 3 16 oz. 89¢
Prince Noodles 3 89¢
Tetley Tea Bags 100 for 89¢
Borateem 55 oz. 69¢ 7 lb. 2 oz. \$1.29
Cott Dry Cocktail Mixes 12 to 49¢

Carnation Coffee Mate 11 oz. 69¢
Carnation Coffee Mate 18 oz. 99¢
Ocean Spray Cranberry Juice Cocktail 48 oz. 65¢
Tip Top Fruit Filled Pies 2 8 oz. 25¢
Yuban Instant Coffee 8 oz. \$1.29
Briar Rabbitt Molasses 12 green label 33¢
Cadillac 5 in 1 100% meat for dogs 6 14 1/2 oz. 99¢
Schuler Potato Chips 13 ounce twin pack 59¢

CHUN KING Chinese Foods
CHOW MEIN Noodles 6 3 oz. 99¢
CHICKEN 24 oz. Chow Mein 59¢
MUSHROOM 24 oz. Chow Mein 65¢
FRIED Rice with chicken 1 1/2 lb. 49¢

Frozen Food Special! Snow Crop
Cut Green Beans 24 oz. or Cut Corn 39¢

FROZEN FOOD SPECIALS
Nabisco Chocolate CHIP COOKIES 16 oz. 39¢
Birds Eye TASTI FRY'S 2 10 oz. Packages 45¢

PRODUCE "GARDEN GOODNESS"
50 EXTRA TOP-VALUE STAMPS WITH PURCHASE OF 6 FLORIDA SEEDLESS GRAPEFRUIT

JUMBO BUNCH PASCAL CELERY 25¢
POPULAR VIEW-ALL TOMATOES 33¢
PHILODENDRON - 8" Pot, \$1.19 Value PLANTS 59¢

EXQUISITE FINE IMPORTED TRANSLUCENT CHINA
YOUR CHOICE OF TWO ELEGANT PATTERNS
Regency Rose
featuring fluted rims, the hallmark of the most expensive china.
Royal Elegance
With the edges rimmed in jeweler's rare quality, genuine platinum.
Create a mood for gracious dining with a table service so fine, you'll be tempted to display it in a cabinet and bring it out only for the most important occasions. Yet, now so inexpensive you can grace your table with it every day!
* DINNER PLATES
* CUPS * SAUCERS
* DESSERT DISHES
* BREAD & BUTTER PLATES
29¢ EACH with each \$5.00 purchase
This weeks special 29¢ EACH with each \$5.00 purchase

Double Top Value Stamps every Wednesday

27 M A R 27

School Board Moves to Aid Handicapped

During a complex, two-hour discussion revolving around the impact of new state legislation on the responsibility for educating handicapped pupils, the Board of Education Monday night took several related actions to establish a policy course as follows:

1. It voted to take over the operation next year of the pre-school class housed at Kenney St. School and presently operated by the Central Palmy Association of Greater Hartford for children from Manchester and several area towns.

2. It declined to back a request for expansion of the pre-school class to now sponsored at the Gesagra Center of the West Hartford campus of the University of Hartford.

3. The board took no action on a third request—that it begin and sponsor a pre-school program for mentally retarded children. The request came from the Manchester Association for the Help of Retarded Children.

4. Board members also agreed that they should seek an informal meeting with the Board of Directors to discuss the implications of these and other new proposals which may be forthcoming as the result of new laws relating to education of the handicapped, plus other legislation passed by the 1967 General Assembly.

The reason for wanting to meet with the directors, school board members said, was to brief them on the meaning and some of the details behind the thinking and its actions in regard to special programs like the ones under discussion last night.

In each proposal, the school administration had submitted estimated separate budgets for the programs. Under any program the school board agreed to start—and for the Gesagra Center program which it already operates—the board would receive full tuition for children from surrounding towns, plus state reimbursement of two-thirds the cost for Manchester children.

However, the Board of Directors would be required to establish separate accounts for each new program and to put up funds for their operation in advance. Tuitions collected from other towns and Manchester's own reimbursements would then be returned to the General Fund.

The state laws covering such programs make it mandatory for towns to offer them beginning in 1969. Public Act 481 will require the towns to provide special services to paroled "umbrella bill," will require them to offer services for the perceptually, physically, mentally, socially and emotionally handicapped.

The proposals under discussion last night relate to P.A. 487, under which the state will reimburse individual towns a base two-thirds of their costs for operating such programs.



1205 SHOP-RITE PRODUCTS



BRING YOU GREATER EXTRA BAG SAVINGS

RED HAWAIIAN PUNCH 3 1-qt. 14-oz. cans 89¢

SHOP-RITE APRICOT NECTAR 4 1-qt. 14-oz. cans \$1
WELCHADE DRINK 4 1-qt. \$1
WINDX SPRAY WINDOW CLEANER 15-oz. can 39¢
ASSORTED CANNED SODA 12 12-oz. cans 89¢
FAMILY NAPKINS 40 count each 9¢
WESSON OIL gal. 1.89
SHOP-RITE WHOLE TOMATOES 4 1-lb. 12-oz. jars \$1

SHOP-RITE PEANUT BUTTER Creamy or Chunky 2-lb. 8-oz. jar 79¢

ALL LAUNDRY DETERGENT 3-lb. 1-oz. box 59¢
RICE-A-RONI 3 8-oz. boxes \$1
SHOP-RITE CHUNK WHITE TUNA 3 6 1/2-oz. cans 89¢
SKIPPY PEANUT BUTTER 18-oz. jar 54¢
CLOROX BLEACH gal. 49¢

FROZEN FOODS SPECIALS! Casseroles 8 8-oz. pkgs. 99¢
Casserole Sale 1.19
SHOP-RITE POTATOES 3 2-lb. bags 89¢
CUT FRENCH BEANS 5 5-oz. pkgs. 99¢

ORANGE JUICE 3 87¢ 6 95¢

SHOP-RITE SPINACH 10 10-oz. pkgs. 99¢
WHOLE STRAWBERRIES 2 16-oz. cups 79¢
SHOP-RITE SOLE FILLET 2 1-lb. pkgs. 99¢
PECAN TWIST CAKE 10-oz. pkg. 59¢

SHOP-RITE TOMATO JUICE 4 1-qt. 14-oz. cans \$1

MAXWELL HOUSE COFFEE 10-oz. jar 1.27
CALO DOG OR CAT FOOD 8 1-lb. cans \$1
HERSHEY CHOCOLATE SYRUP 16-oz. can 19¢
SOS PADS 2 10-oz. ct. 39¢
CARNATION SLENDER 4-pak 79¢
SHOP-RITE FLOOR WAX 1-qt. can 49¢
PENN DUTCH NOODLES 4 8-oz. bags \$1

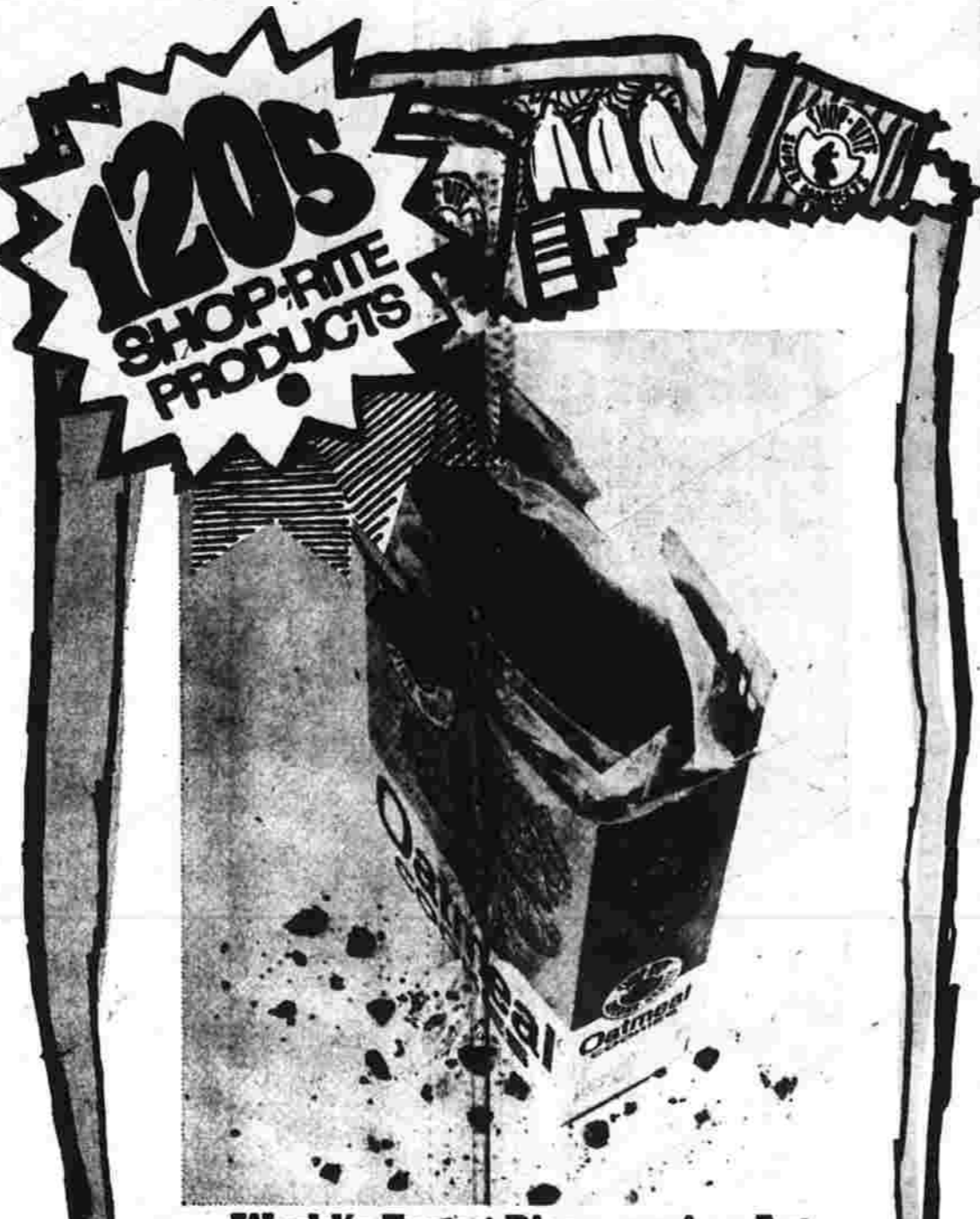
GREEN GIANT VEGETABLES Assorted Varieties 4 1-lb. cans 89¢

SLICED OR SMALL WHOLE BEETS 2 2-lb. cans 29¢
SCOTT PLACE MATS 3 pkg. of 34 1/2 \$1
BONELESS or SKINLESS SARDINES 4 1 1/2-oz. cans \$1
KOUNTY KIST CUT ASPARAGUS 4 10-oz. cans 89¢
CHEF BOY-AR-DEE SPAGHETTI 3 16-oz. cans \$1

WHY PAY MORE? American Cheese 1-lb. 29¢
Parkay Margarine 4 1-lb. pkgs. \$1
CRESCENT ROLLS 4 8-oz. pkgs. \$1
BLUE BONNET 1-lb. 39¢

SWISS CHEESE 8-oz. pkg. 39¢

SHOP-RITE MARGARINE 6 1-lb. pkgs. \$1



SWEET CALIF. CARROTS 2 1-lb. cello bags 25¢

FRESH SPINACH 10-oz. bag 19¢

FLORIDA SEEDLESS GRAPEFRUIT 5 for 49¢
PASCAL CRISP STALK CELERY 19¢

U.S.D.A. GOVERNMENT GRADE "A" OVEN READY YOUNG HEN TURKEYS 29¢ lb. 10 to 14 Lbs.

SHOULDER STEAKS YOUR CHOICE 99¢
CUBE STEAKS
VEAL STEAKS

GROUND BEEF 57¢
GROUND CHUCK 67¢
GROUND ROUND 89¢
HAMS 79¢

SHOP-RITE BACON 1-lb. pkg. 59¢

PASSOVER NEEDS AT LOW LOW SHOP-RITE PRICES

SHOP-RITE GOLDEN CORN 5 1-lb. cans \$1
CHICKEN OF THE SEA CHUNK TUNA 3 6 1/2-oz. cans 89¢
PINEAPPLE-GRAPEFRUIT SHOP-RITE DRINK 4 1-qt. 14-oz. cans 89¢

Postmen Face Sleet, Snow And Mugging

WASHINGTON — The Post Office department was advised this week to change the time-honored goal to state that the mail must go through regardless of snow, sleet, rain or thug.

Rep. Robert N.C. Nix (D-Pa.) suggested the change after his house postal subcommittee was told of the increasing number of assaults and crimes against postal employees.

The most dramatic testimony was offered by Jack Leventhal, president of the Brooklyn, N.Y. local of AFL-CIO's letter carriers, who said assaults against letter carriers "has spread like wildfire in the slum sections of Brooklyn."

Mail carriers there, he declared, fear for their safety while serving their routes on the first and 15th of each month when they deliver large numbers of welfare and pension checks.

Formerly, Leventhal said, letters rifled mail boxes got the checks which they would use most frequently to buy liquor and dope.

Both witnesses urged congressional approval of legislation to make it a federal crime to assault any postal employee. Both explained it was now a federal crime to steal a letter from a mail carrier, but if a carrier was beaten in the process his case would be referred to local authorities which frequently took little interest in them.

Assistant Postmaster General Richard J. Murphy said the attacks against postal employees constituted "a very disturbing trend" and he called for prompt action by congress to deal with it. Said he: "The fear of possible attack has become more acute since last summer's rioting and as tension and actual attacks have mounted in some of the high crime areas."

Murphy suggested the subcommittee broaden the legislation to make it a federal crime to assault any federal employee while he's engaged in government work.

That he objected to that section in the bill to make it a federal offense for a postal employee to assault a fellow employee. He thought this was a matter that could best be handled through the disciplinary process and by local courts.

IVORY 4 PACK 8¢ towards the purchase of Personal Ivory 4 Pack

MAZOLA CORN OIL 1.99

KEN-L-RATION DOG FOOD 6 1-lb. cans 79¢

HOT ROLL MIX OR CORN MUFFIN SHOP-RITE CAKE MIX 4 1-lb. 2-oz. boxes \$1

DISH DETERGENT IVORY LIQUID 40¢

SHOP-RITE GOLDEN CORN 5 1-lb. cans \$1

CHICKEN OF THE SEA CHUNK TUNA 3 6 1/2-oz. cans 89¢

PINEAPPLE-GRAPEFRUIT SHOP-RITE DRINK 4 1-qt. 14-oz. cans 89¢

25¢ OFF WITH THE PURCHASE OF ONE CARTON OF ANY SIZE CHESTERFIELD L&M, LARK OR 101'S CIGARETTES

LIQUID DISH DETERGENT ROSE LOTION VEL 57¢

AJAX CLEANER 2 14-oz. cans 27¢

587 MIDDLE TURNPIKE EAST MANCHESTER

Prospect Ave. and Blvd. West Hartford

450 Slater Road, New Britain

280 Windsor Ave., Wilton

1269 Albany Ave., Hartford

FOR DISHWASHING CASCADE DETERGENT 73¢

27

MAR

27

Around the Grapefruit League WITH Earl Yost HERALD SPORTS EDITOR Strong Silent Man To Right Dodgers

ST. PETERSBURG, Fla. — Principal concern for Walter Alton, the strong silent man, is to rig the Los Angeles Dodgers.

Record Holder "Pitching is the best part of any ball club," the tall manager said. Starting his 10th year at the helm of the Dodgers, Alton holds the record for most consecutive years managing one club.

More Set Lineup "We'll have a more set lineup this year and I've been most pleased with the deal that we made. Zito Veralles has been great at shortstop.



EASY OUT at home plate as Dodgers catcher Jim Campanis is about to make tag on Cincinnati's Jimmy Williams sliding to home. (AP Photo/Fox).

Grant Experienced Getting back to Grant, Alton felt this way about the big Negro right-hander.

Yukica Grooms Gridiron Net NEWTON, Mass. (AP)—Boston College football coach Joe Yukica is Thursday greets his squad as 115 hopefuls turn out for the first of 20 spring training sessions.

Late Training for Kaat, Shaw, O'Toole Wondering

MIAMI (AP) — Spring training will be a little late this year for Jim Kaat, but Bob Shaw and Jim O'Toole are wondering whether it will come at all for them.

Kaat, Minnesota's ace left-hander who pitched the Twins to the 1966 pennant, started his spring training Monday by hurling 15 minutes of batting practice.

Hates Losses But Not Sad-Williams

PORT MYERS, Fla. (AP) — "I hate to lose, but I'm not sad over that loss. Wadeski was great," said Boston Red Sox manager Dick Williams.

The loss was Boston's 21st defeat at the hands of the Pittsburgh Pirates Tuesday in the Grapefruit League.

First Florida Club to Win 10 High Rated Cards Favored To Repeat NL Performance

ST. PETERSBURG, Fla. (AP)—The pitcher-striker duo of the St. Louis Cardinals, with power and speed to spare, have looked up where they left off until April 22, then 10 more seasons over the next 14 days.

Slow-Pitch Ball

The recreation department announces that there will be an organizational meeting of the Slow-Pitch Softball League Monday night at the Senior Citizens Center.

Blades Have Bladed play which could be the decisive game in their Northern Division play-off series.

Banquet for Rec Youths Tonight

Guest speaker at the Recreation Department's Annual Youth Banquet will be Hon. William P. Carlin.

Inner Sanctum' Troubles As Boys Get the Message

WINYER HAVEN, Fla. (AP)—Notbook sitting in the Boston Red Sox training camp is a summons to manager Dick Williams.

Exciting, Youthful Club for Chicago

SCOTTSDALE, Ariz. (AP) — Leo Durocher getting thinned out of games. Lou Johnson trying to stretch a triple into a home run.

Race Barrier No Problem For Athletes

WASHINGTON (AP) — Bob Mitchell, Washington Redskins halfback, says professional athletes face no color barriers when they talk to youngsters living in the slums.

Little League Registration

BOYS: 9 YEARS THROUGH 12 YEARS ACCOMPANIED BY PARENTS

Players Don't Tire Early, Jeff Mullins Appears Fresh

A player doesn't get tired early in a season, and San Francisco's Jeff Mullins appears about as fresh as one can get.

Bowling

SNOW WHITE — Freda Madden 135, Mary Lee 134-146-139, Barbara Kelly 133-142, Diane Pomakis 120, Marie Despret 135, Alice Gordon 128.

Burns to Open Basketball Camp

DONALD BURNS, coach of East Catholic High School, has announced that the Holy Cross basketball camp is slated to begin June 24 and lasted until June 28.

Mavericks Offer Hayes \$500,000 May Develop Salary War

HOUSTON, Tex. (AP) — The first player salary war between the two major professional basketball leagues may develop over the signing of Elvin Hayes.

Semi-Final Rounds At Holiday Today

Getting underway at 3:30 this afternoon, the semi-finals of the Holiday Lanes Junior Championship final are on.

Round Three Of Playoffs For Celtics

BOSTON (AP)—Round Three of the Boston Celtics' National Basketball Association playoffs with the Detroit Pistons unfolds at Boston Garden and Celtics coach Bill Russell will have a wary eye on the rebound.

Corley Here

Corley's Collegians will face Mortary Bros. Saturday night at 8 o'clock at Clark Arena.

Ski Notes

By BILL SACHERER With snow conditions fast disappearing, one must go far north to get most last snow of the winter, unless we get a sudden weather change.

RECORD NUMBER

BOSTON (AP)—A record 3,000 applications have been received for Suffolk Downs 60-day thoroughbred racing meeting April 19-July 4.



IN THE JET AGE... 490-passenger jetliners will speed round the world, powered by Pratt & Whitney Aircraft engines

IN A GOOD JOB AT THE AIRCRAFT

Super-planes like the giant Boeing 747 that will take to the air this year, fast ships, utilities, industry... they all need jet-power provided by Pratt & Whitney Aircraft engines.

Jet-Age Jobs Open Now Machine Operators • Welders Sheet Metal Assemblers Bench Mechanics • Trainees Aircraft Engine Mechanics and Testers Tool and Die Makers and Many Others

Pratt & Whitney Aircraft An equal opportunity employer

choose the terrific McGREARY SCOT original equipment quality at a price

Table with columns for Tubelens Blackwells, Tubelens Whitewalls, and Fed. Excise Tax. Includes a 'No Trade-In Tire Required' note.

Brand New! SPARK PLUGS Save on Buy One Get One Free 59c ea. CEIMOUR AUTO STORES

LITTLE LEAGUE REGISTRATION BOYS: 9 YEARS THROUGH 12 YEARS ACCOMPANIED BY PARENTS FRIDAY MARCH 29 6:30 P.M.

FRIDAY MARCH 29 6:30 P.M. AMERICAN LEAGUE - Waddell School NATIONAL LEAGUE - Buckley School INTERNATIONAL LEAGUE - Verplanck School

FREE TRAINING WITH PAY IF YOU DON'T HAVE SHOP EXPERIENCE—you may get 120 hours of instruction and training on the machine you have been hired to operate.

About Town

Manchester Chess Club will meet tomorrow from 8.30 to 10.30 p.m. at Iona Hall, Regent St.



Scouts Donate Afghan

Miss Carol Cotton, left, of the Hilltop Manor Convalescent Home, Rocky Hill, accepts an Afghan from members of Girl Scout Troop 2, Cindy LaMaggio, Mrs. Lawrence P. Dunn, troop leader, Carol Knight, and Kathy Pemberton.

Reardon Report, Foreign Policy, Topics for Bar

The Connecticut Bar Association will hear talks on the issue of "fair trials and a free press" and on American foreign policy at its mid-year meeting, to be held April 15 at the Hotel America in Hartford.

80 Will Attend Bible Seminar

About 80 members of the Manchester congregation of Jehovah's Witnesses are planning to attend a three-day Bible seminar starting Friday at 6.45 p.m. at Case Gymnasium, 322 Prospect St., Willimantic.

Advertisement for TREE and SHRUB SPRAYING by CARTER TREE EXPERT CO. with contact information.

Advertisement for THINK SMALL VOLKSWAGEN by TED TRUDON VOLKSWAGEN with contact information.

Advertisement for TAY FAIRWAY FIRST artificial flowers and foliage.

Advertisement for RANGE FUEL OIL GASOLINE BANTLY OIL.

Advertisement for SPRING TO THESE SPECIALS featuring various food items and prices.

Advertisement for Manchester SAVINGS & LOAN Association with an image of a house.

Advertisement for PINEHURST GROCERY featuring various food products and prices.

Advertisement for River Rats Ferry Supplies with details about boat and ferry services.

Manchester Evening Herald

Manchester—A City of Village Charm MANCHESTER, CONN., THURSDAY, MARCH 28, 1968

Training Flight Kills Soviet's Yuri Gagarin



Yuri A. Gagarin

Czech Party Debates Sweeping Reforms

PRAGUE (AP) — The Communist Party of Czechoslovakia is debating sweeping political and economic reforms.

Brave Enemy Fire River Rats Ferry Supplies

Los Angeles Times Washington Post News Service... The river and at one point last month actually blocked the channel by a cable and bamboo barrier.

New F111 Fighter-Bomber Missing on Asian Flight



Gen. Creighton W. Abrams, top deputy to Gen. William Westmoreland in Vietnam, talks during an outdoor conference with President Johnson and others in the Rose Garden yesterday at the White House.

Jet Overdue On Mission, U.S. Reports

WASHINGTON (AP) — The Defense Department announced today one of the Air Force's new F111A fighter-bombers was missing on a mission in Southeast Asia.

Pier Strike In New York Nearing End

NEW YORK (AP) — An arbitrator today handed down a decision aimed at settling the 11-day waterfront strike and said it would send the longshoremen back to work this afternoon.

Congestion Marking Drive in Wisconsin

MILWAUKEE, Wis. (AP) — The Republican ballot, said Congestion has begun to mark the campaign road in Wisconsin.

28 MARCH 28